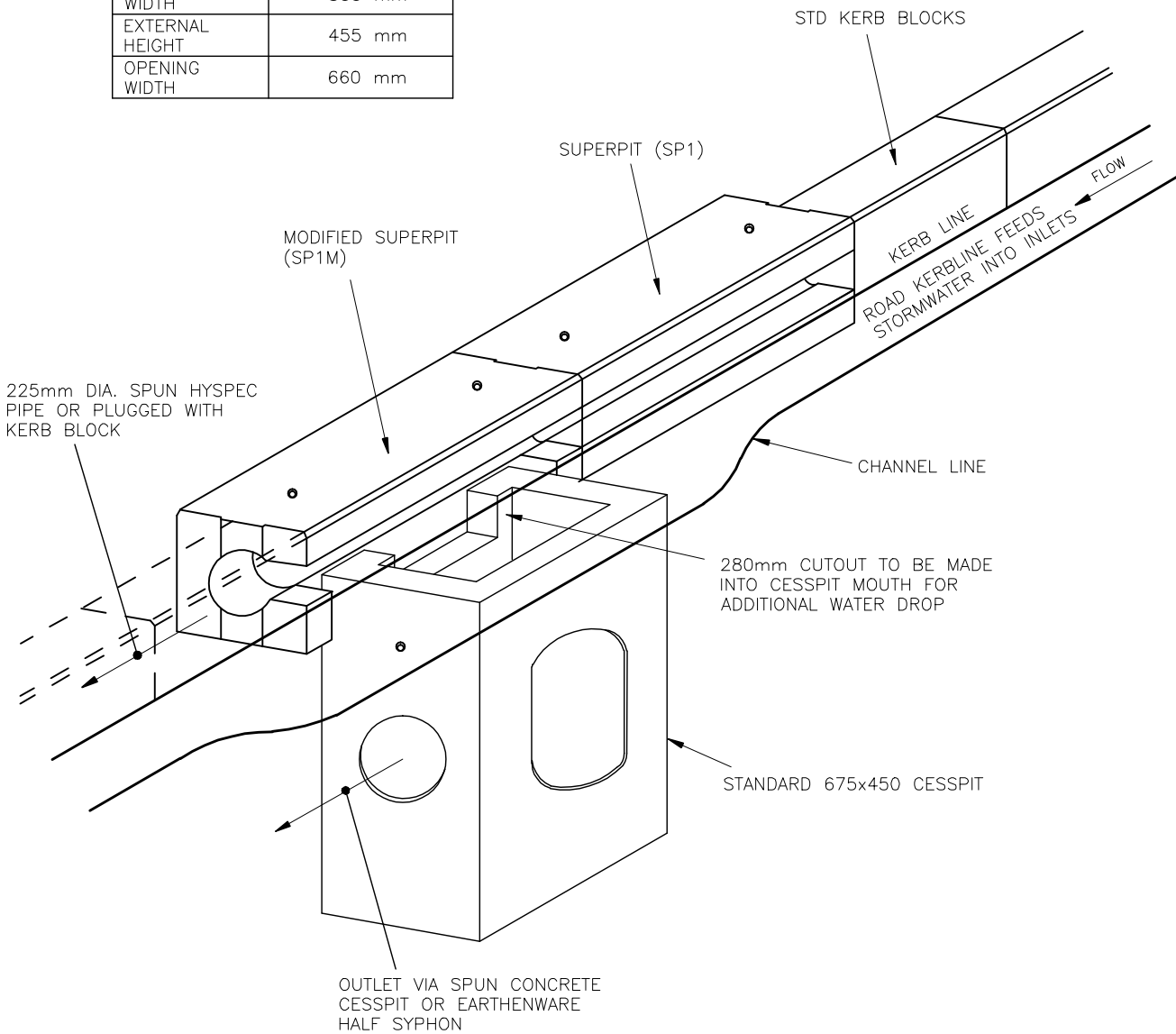


HYNDS SUPERPIT TYPE	STANDARD SUPERPIT	MODIFIED SUPERPIT
HYNDS SUPPLY CODE	SP1	SP1M
PRODUCT WEIGHT	517 kg	452 kg
EXTERNAL LENGTH	1200 mm	
EXTERNAL WIDTH	500 mm	
EXTERNAL HEIGHT	455 mm	
OPENING WIDTH	660 mm	



SCALE: N.T.S.

Note:

1. For steep road gradients ramped kerblines leading into the inlets is required.
2. For catchpit layout and channel specifications etc see SD 3.06

ENGINEERING  
STANDARDS MANUAL

ISSUE 3.7  
DECEMBER 2002

# HYNDS STORMWATER SUPERPITS

STANDARD DETAIL

SD  
3.06.04