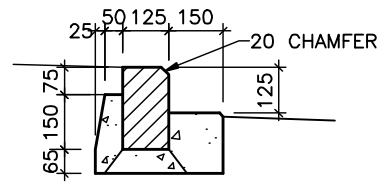
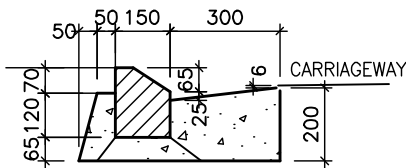


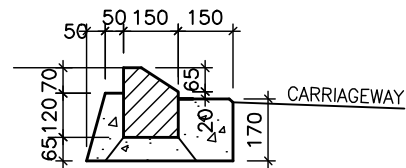
PRECAST VERTICAL KERB & CHANNEL



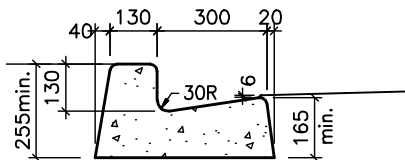
PRECAST VERTICAL KERB & STUB



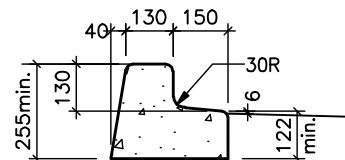
PRECAST MOUNTABLE KERB & CHANNEL



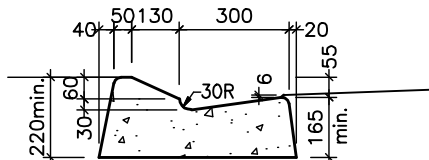
PRECAST MOUNTABLE KERB & STUB



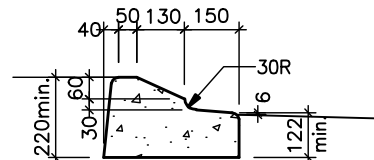
MACHINE LAID VERTICAL KERB & CHANNEL



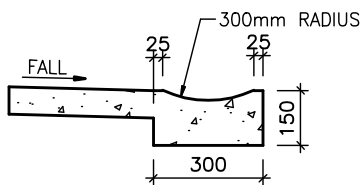
MACHINE LAID VERTICAL KERB & STUB



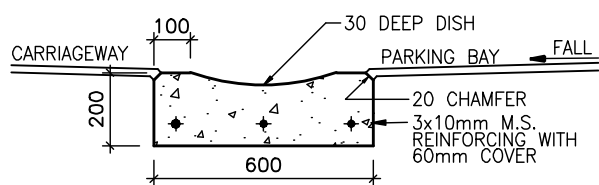
MACHINE LAID MOUNTABLE KERB & CHANNEL



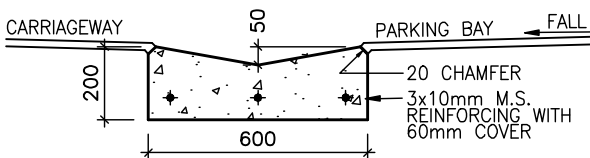
MACHINE LAID MOUNTABLE KERB & STUB



DISH CHANNELS IN FOOTPATHS



DISH CHANNELS IN ROADS TYPE I



DISH CHANNELS IN ROADS TYPE II

NOTES:

1. Kerb blocks and insitu concrete - 17.5 MPa
2. Slip form concrete - 25MPa
3. Jointing -
 - *Precast-12mm gap neatly pointed with cement mortar
 - *Slip form-Crack control joints cut @ 4.0m intervals max.
 - *Cast Insitu-Crack control joints cut @ 4.0m intervals max.
4. The omission of the 3x 10mm MS reinforcing bars for the dish channel will need approval from the Engineer.

SCALE 1 : 20