

DRAWING SET INDEX

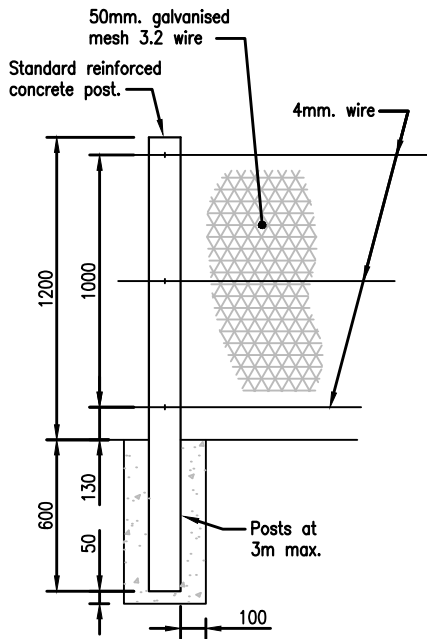
PLAN No.	TITLE	VERSION
RR001	FENCE TYPE A AND B	2.0
RR002	FENCE TYPE C	1.0
RR003	FENCE TYPE D	1.0
RR004	FENCE TYPE E	1.0
RR005	FENCE TYPE F PART ONE OF THREE	1.0
RR006	FENCE TYPE F PART TWO OF THREE	1.0
RR007	FENCE TYPE F PART THREE OF THREE	1.0
RR008	TYPICAL PICKET FENCE DETAIL	1.0
RR009	TYPICAL WIRE FENCE DETAIL A	1.0
RR010	TYPICAL WIRE FENCE DETAIL B	1.0

REVISION	BY	DATE
Draft – for comment	MD	06/13

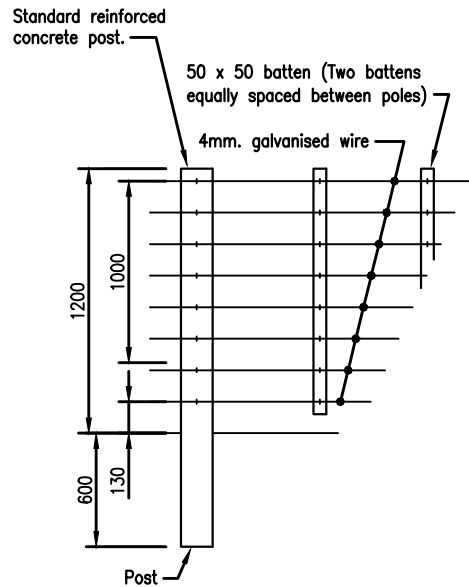


AUCKLAND TRANSPORT CODE OF PRACTICE	SCALE:
TITLE ROAD RESTRAINT DEVICES DRAWING SET INDEX	DRAWING No. RR000 VERSION

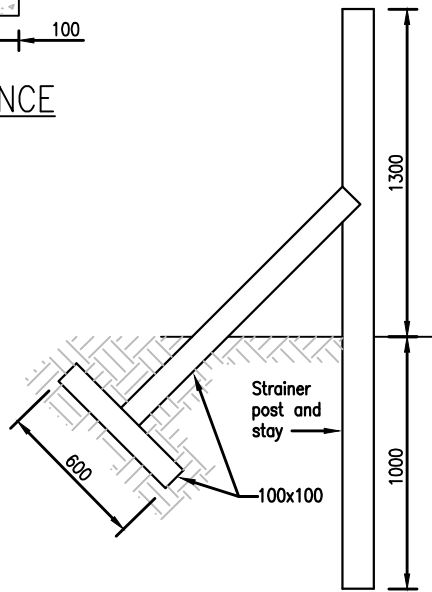
Drawing set for Chapter 9 - Road Restraint Devices



WIRE FENCE
TYPE A



WIRE FENCE
TYPE B



STRAINER POST AND
STAY TYPICAL DETAIL

NOTES

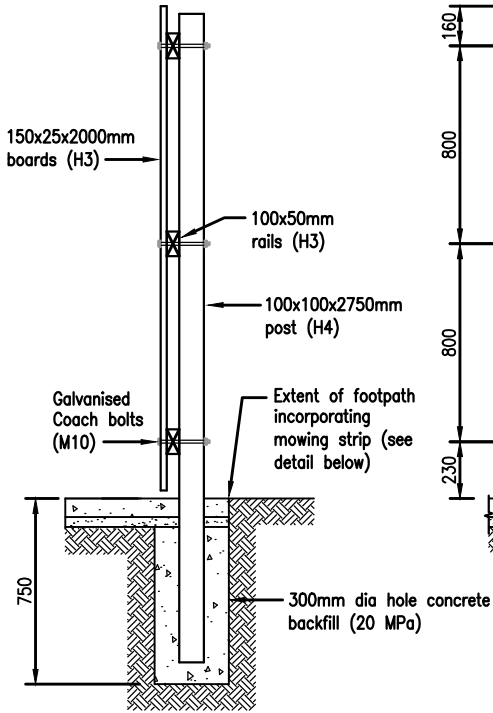
1. Timber must be H4 treated (battens).
2. Battens must be equally spaced between posts.
3. Reinforced concrete posts: Reinforced concrete posts to be used for standard fence type A, and B.
4. Concrete for post foundations to be 20 MPa.

REVISION	BY	DATE
Draft - for comment	MD	06/13

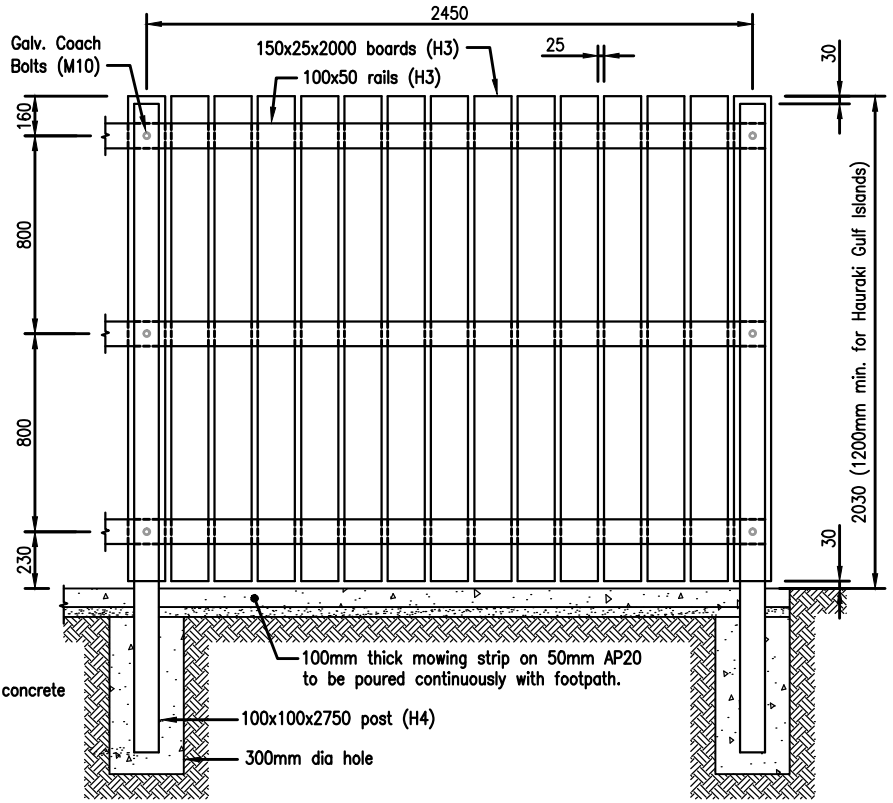


AUCKLAND TRANSPORT CODE OF PRACTICE		SCALE: N.T.S.
TITLE FENCE TYPE A AND B		DRAWING No. RR001
		VERSION 2.0

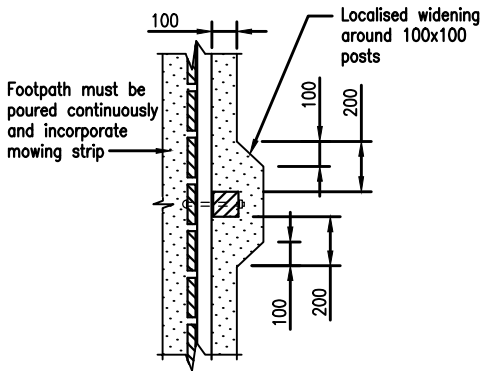
Note:
Fence Type C footing
concrete strength min 20
MPa.



SIDE ELEV. TYPE C



ELEVATION FENCE TYPE C



MOWING STRIP DETAIL

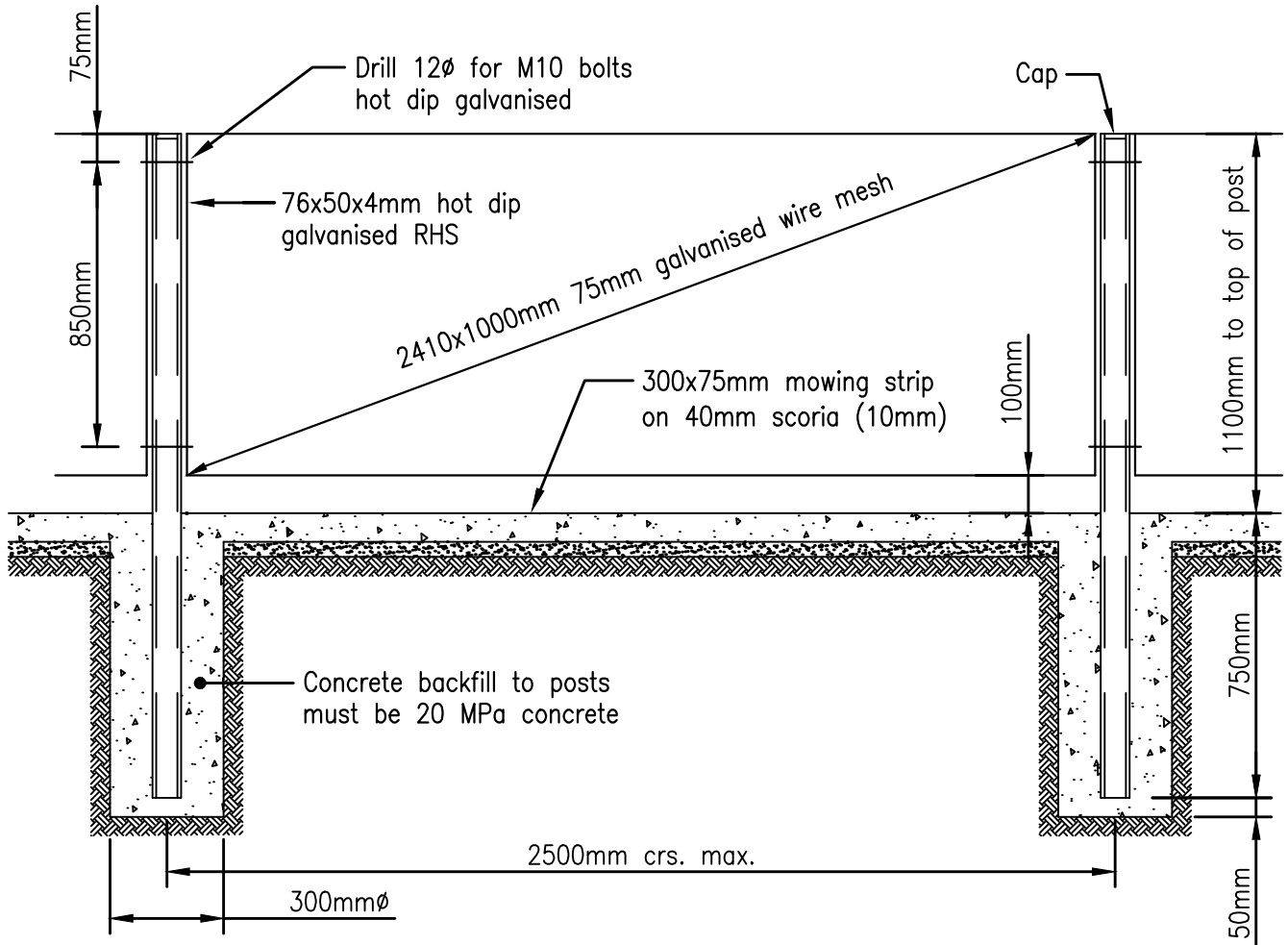
NOTES

1. Timber:
All timber must be retention tanalised pine and dressed 4 sides.
2. Paint:
Prime timber before assembly and paint with two coats approved white paint.

REVISION	BY	DATE
Draft - for comment	MD	06/13



AUCKLAND TRANSPORT CODE OF PRACTICE		SCALE: N.T.S.
TITLE FENCE TYPE C		DRAWING No. RR002
		VERSION 1.0



REVISION

BY DATE

Draft - for comment

MD 06/13



AUCKLAND TRANSPORT
CODE OF PRACTICE

TITLE

FENCE
TYPE D

SCALE:

N.T.S.

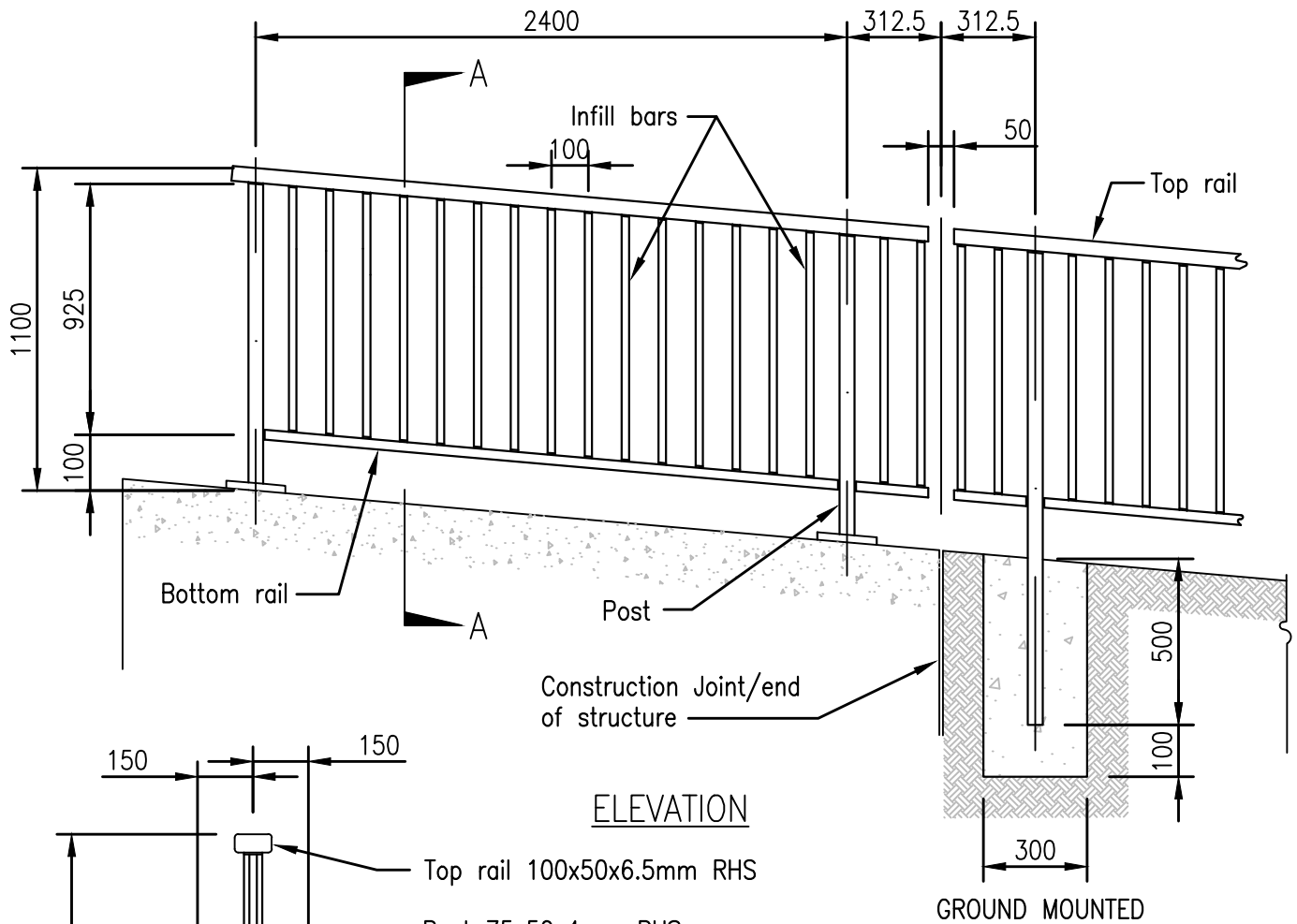
DRAWING No.

RR003

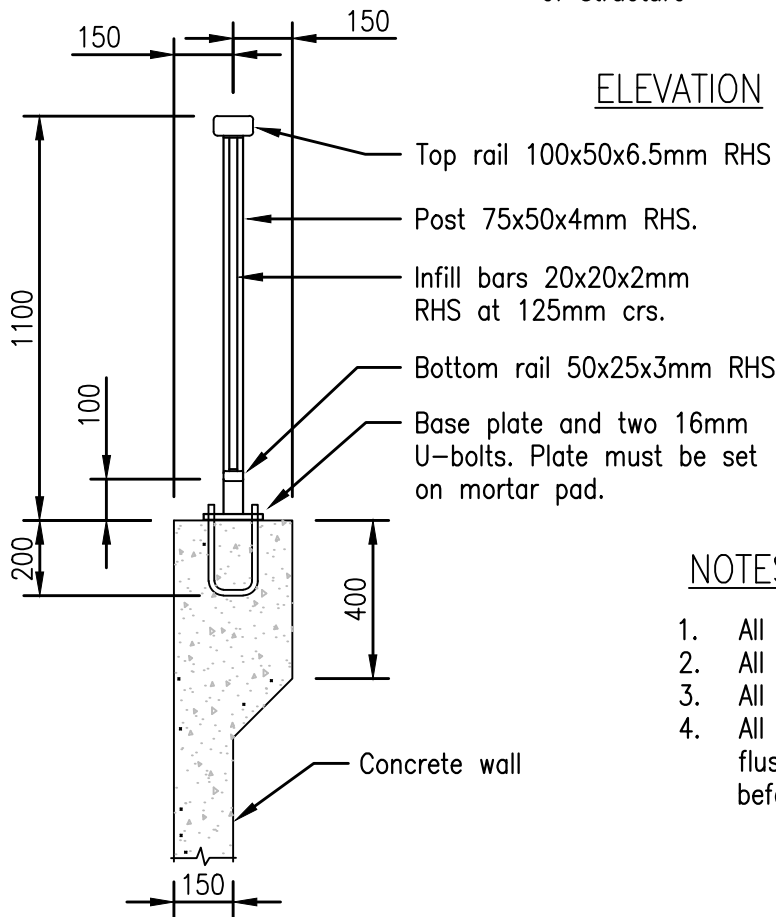
VERSION

1.0

Drawing set for Chapter 9 - Road Restraint Devices



ELEVATION



SECTION A-A

NOTES

1. All posts and bars must be vertical.
2. All fillet welds must be 5mm.
3. All splices in top and bottom must be sleeved.
4. All butt welds must be full depth and ground flush. Assembly must be hot dip galvanised before erection.

REVISION	BY	DATE
Draft - for comment	MD	06/13



AUCKLAND TRANSPORT
CODE OF PRACTICE

TITLE

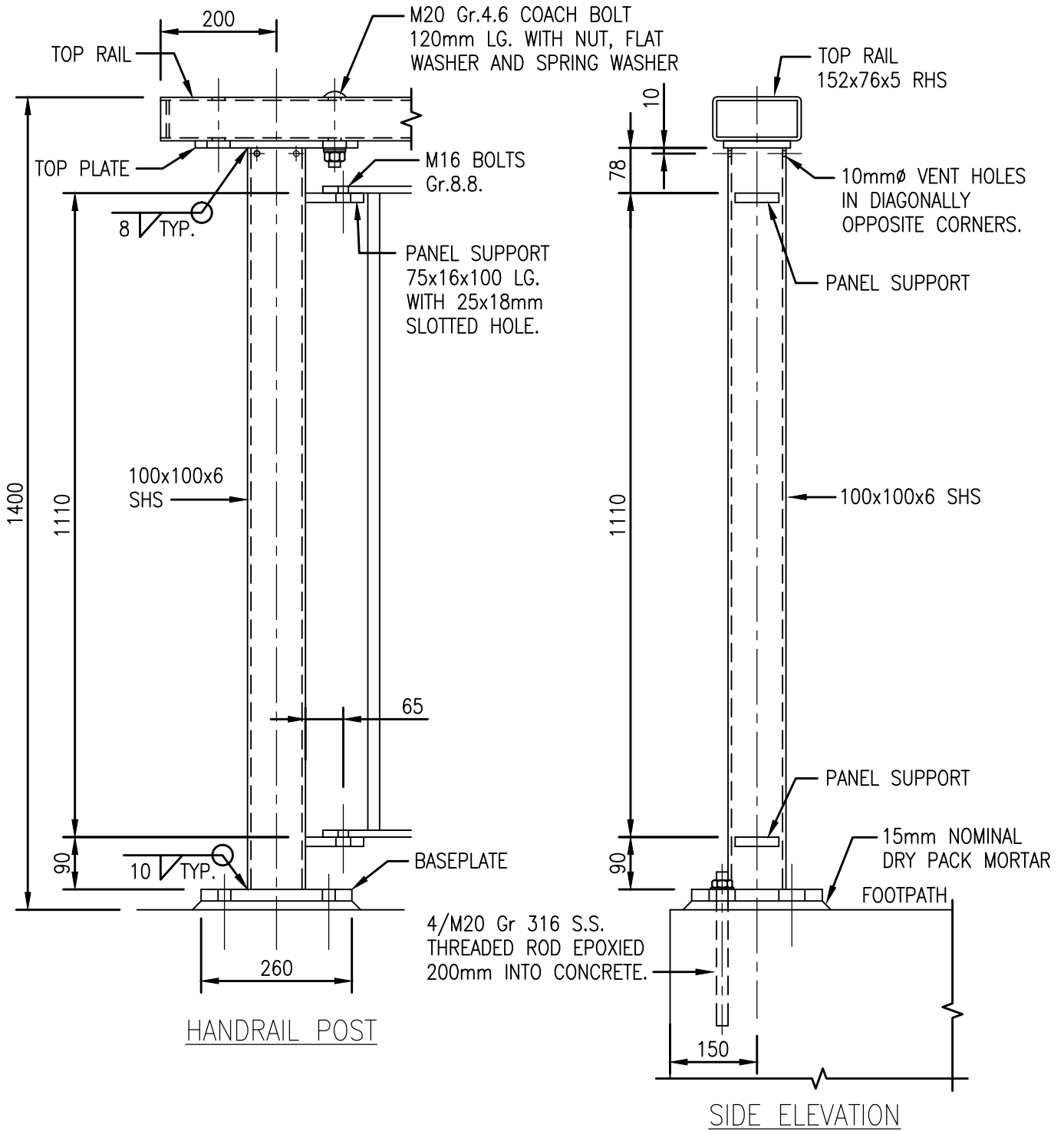
**FENCE
TYPE E**

SCALE:
N.T.S.

DRAWING No.
RR004

VERSION 1.0

Drawing set for Chapter 9 - Road Restraint Devices



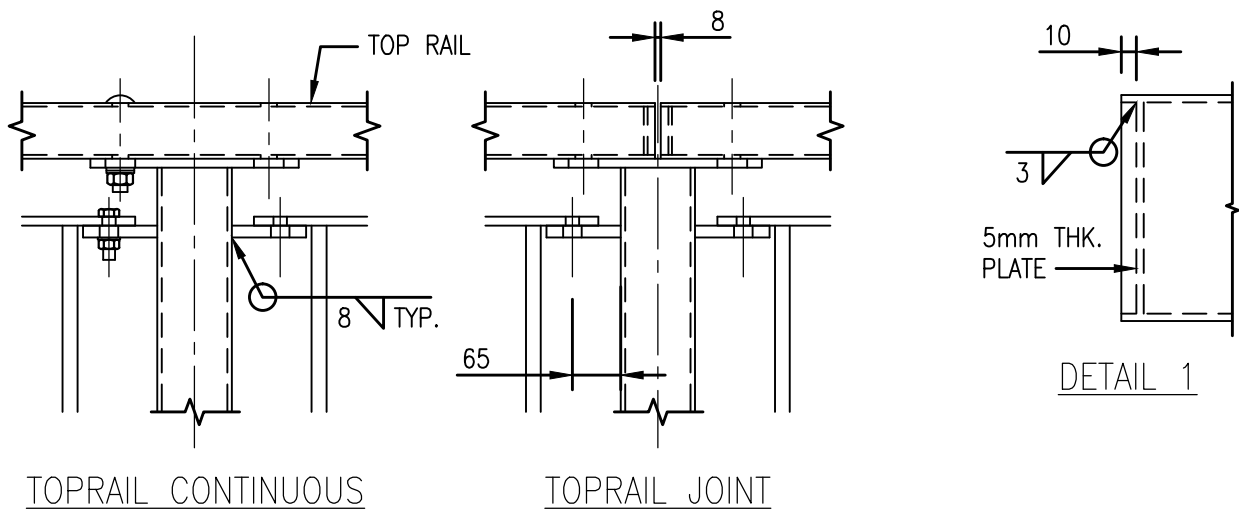
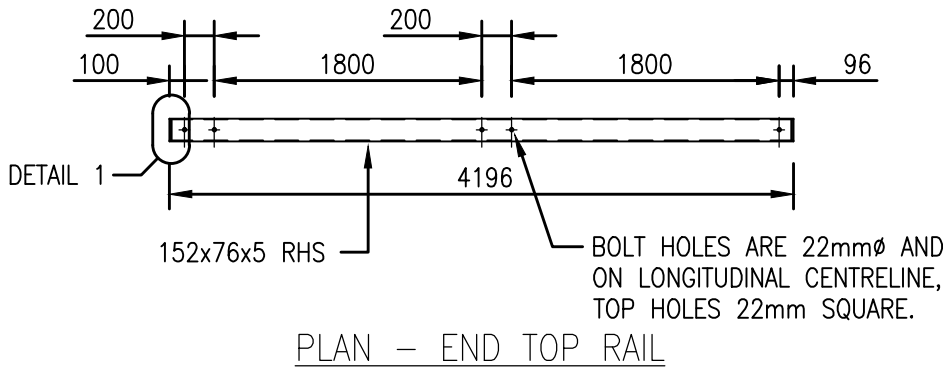
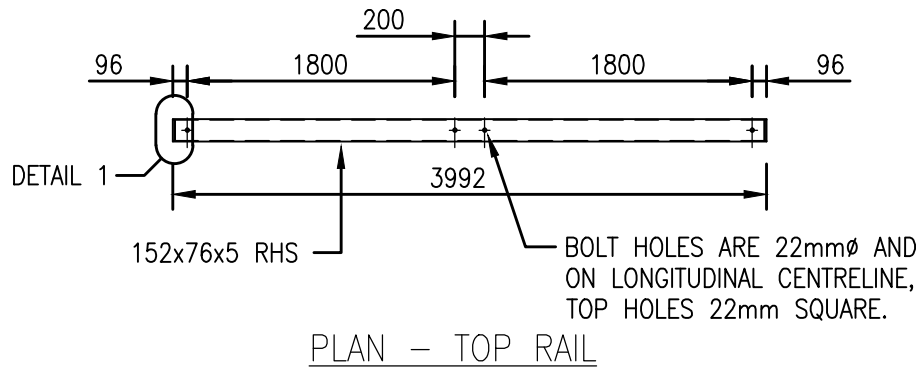
NOTES

1. ALL STEEL COMPONENTS MUST BE HOT DIP GALVANISED AFTER FABRICATION IN ACCORDANCE WITH AS/NZS4680.

REVISION	BY	DATE
Draft - for comment	MD	06/13



AUCKLAND TRANSPORT CODE OF PRACTICE		SCALE: N.T.S.
TITLE FENCE TYPE F PART ONE OF THREE		DRAWING No. RR005
		VERSION 1.0



NOTES

1. ALL STEEL COMPONENTS MUST BE HOT DIP GALVANISED AFTER FABRICATION IN ACCORDANCE WITH AS/NZS4680.

REVISION	BY	DATE
Draft - for comment	MD	06/13

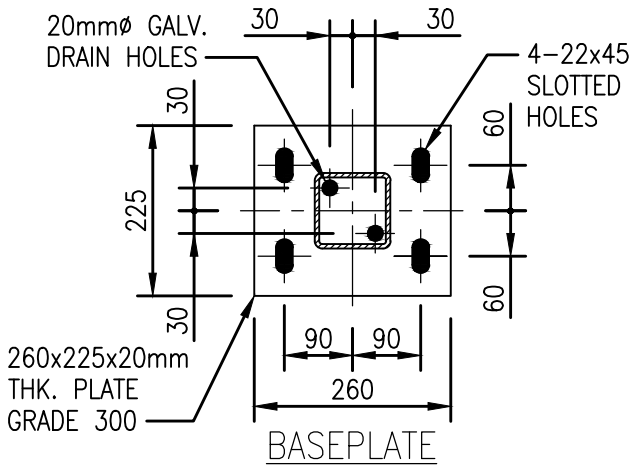
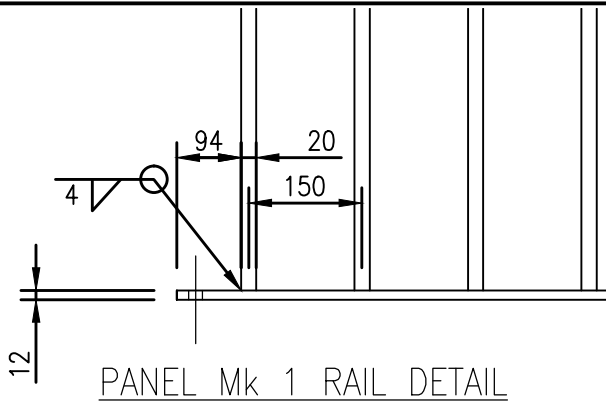
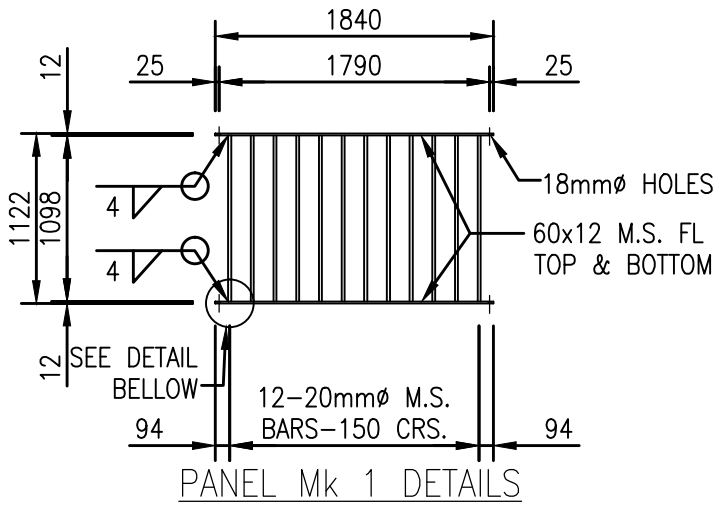


AUCKLAND TRANSPORT
CODE OF PRACTICE

TITLE
**FENCE TYPE F
PART TWO OF THREE**

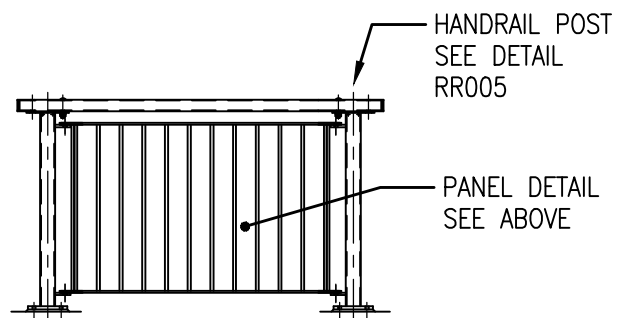
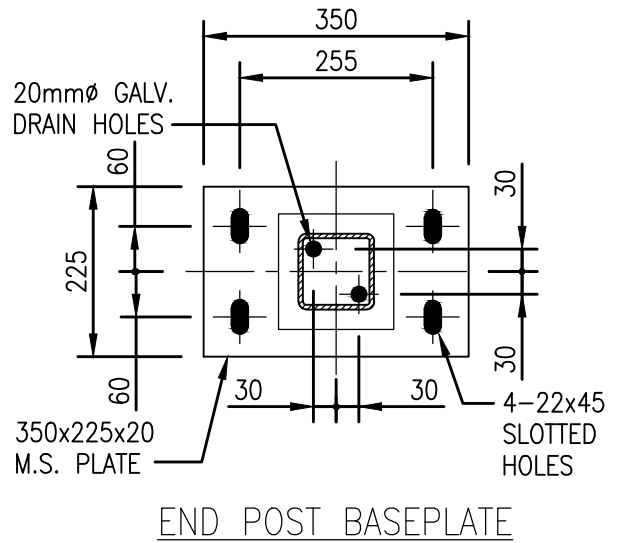
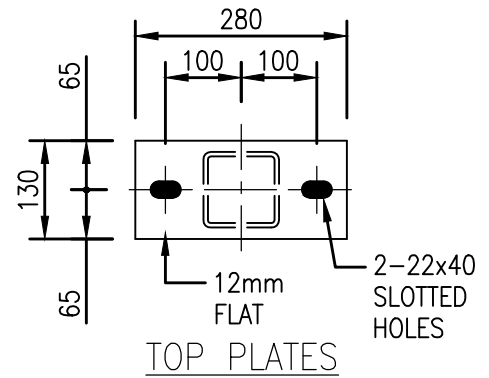
SCALE:	N.T.S.
DRAWING No.	RR006
VERSION	1.0

Drawing set for Chapter 9 - Road Restraint Devices



NOTES

1. ALL STEEL COMPONENTS MUST BE HOT DIP GALVANISED AFTER FABRICATION IN ACCORDANCE WITH AS/NZS4680.



REVISION	BY	DATE
Draft - for comment	MD	06/13

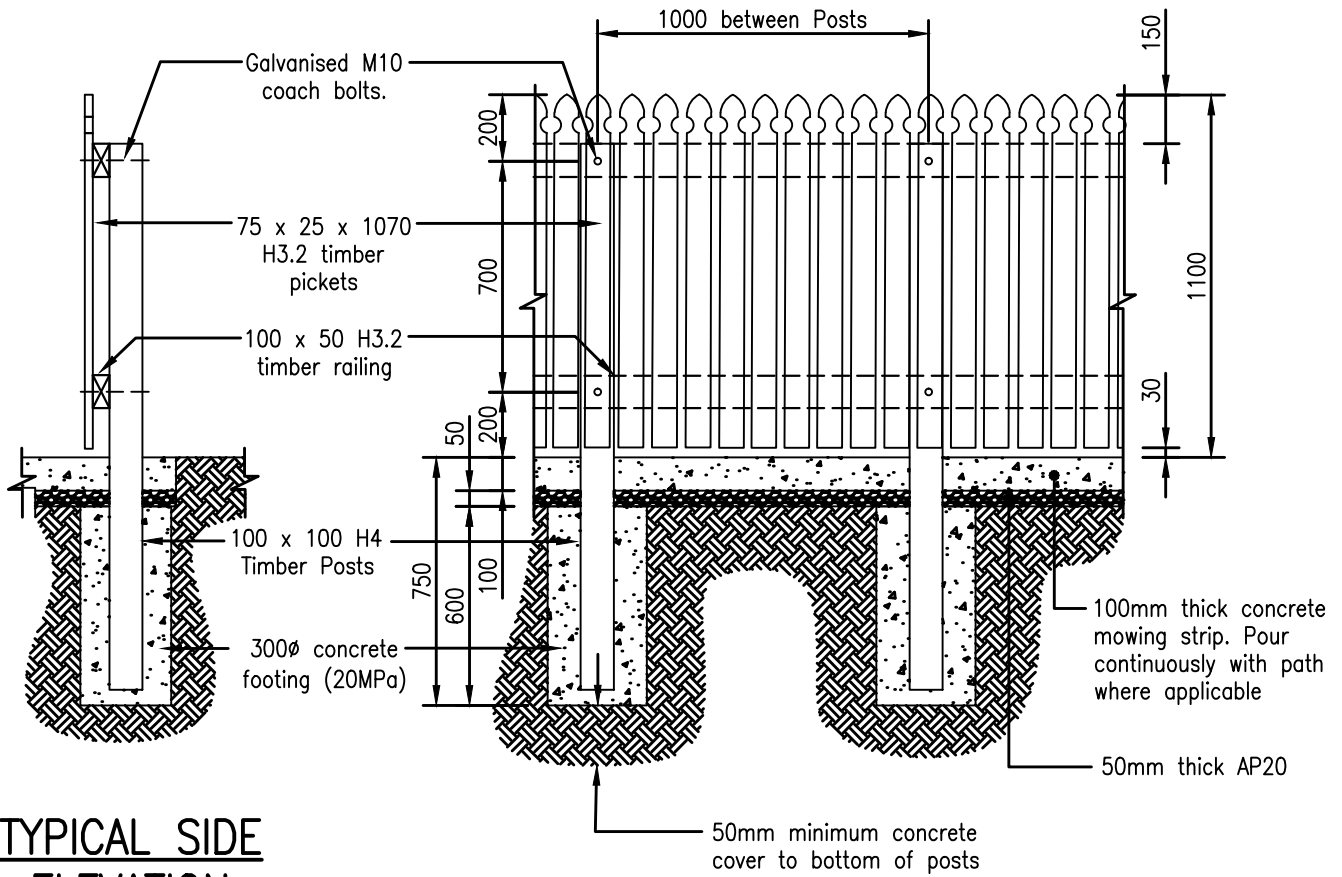


AUCKLAND TRANSPORT
CODE OF PRACTICE

TITLE
**FENCE TYPE F
PART THREE OF THREE**

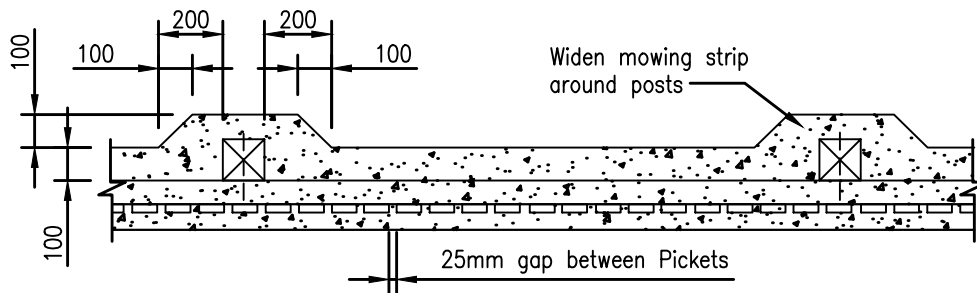
SCALE:
N.T.S.

DRAWING No.
RR007
VERSION
1.0



TYPICAL SIDE ELEVATION

TYPICAL FRONT ELEVATION



TYPICAL PLAN

NOTES

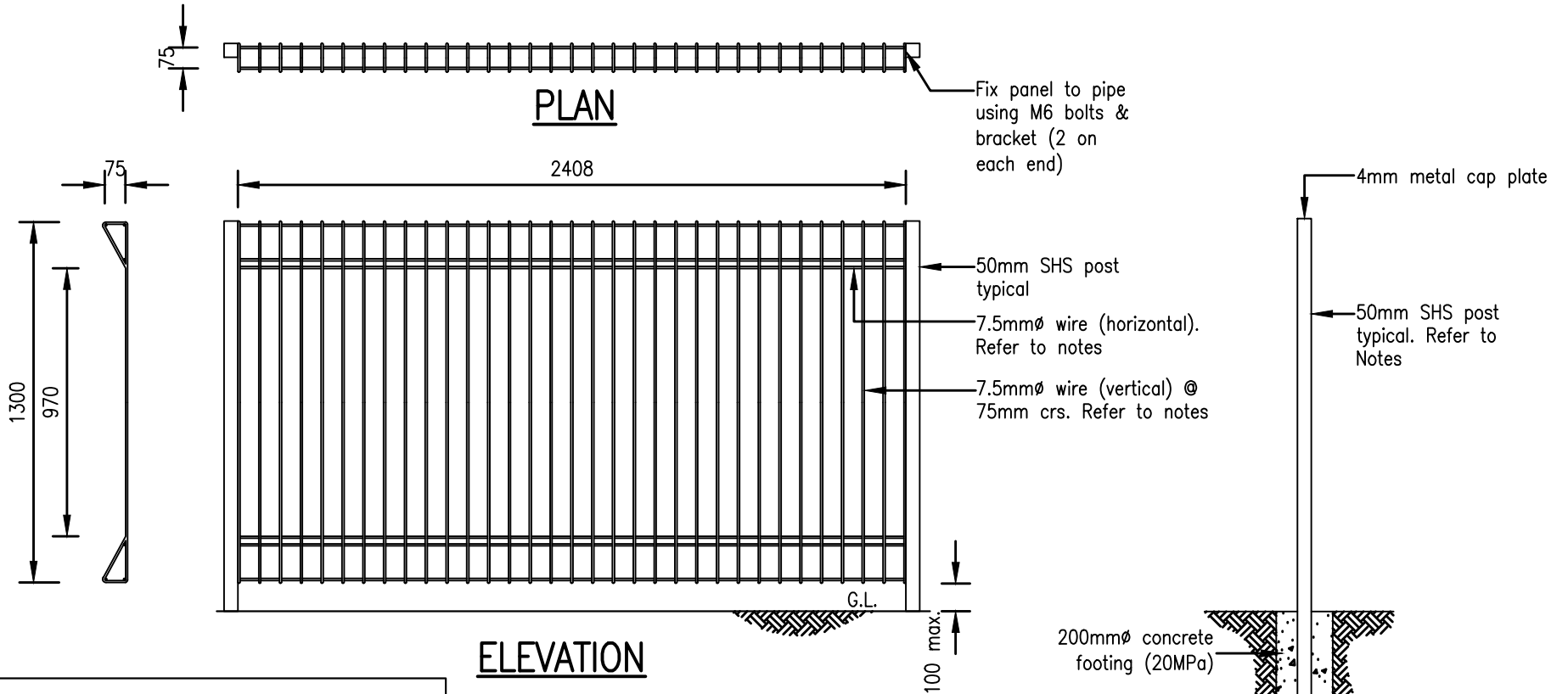
1. All timber must be retention tanned pine and dressed both sides.
2. Prime timber before assembly and paint with coats of Auckland Transport approved paint.

REVISION	BY	DATE
Draft - for comment	MD	06/13



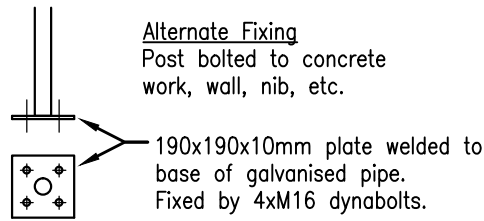
AUCKLAND TRANSPORT CODE OF PRACTICE		SCALE: N.T.S.
TITLE	TYPICAL PICKET FENCE DETAIL	DRAWING No. RR008
		VERSION 1.0

Drawing set for Chapter 9 - Road Restraint Devices



NOTES

1. Fence panels must be hot dip galvanised and powder coated 'Karaka Green' or as approved by the relevant AT Engineer.
2. Fence panels must not have more than 100mm gap from ground level to installed panel.
3. Posts must be 50mmØ hot dip galvanised pipe and powder coated 'Karaka Green' or as approved by the relevant AT Engineer.
4. Posts must be installed vertical.
5. Sharp edges of the panel are to be rounded off before galvanising.
6. Tolerances on overall dimensions of the finished panel to be 25mm and bars to be placed within 2mm of their true location.



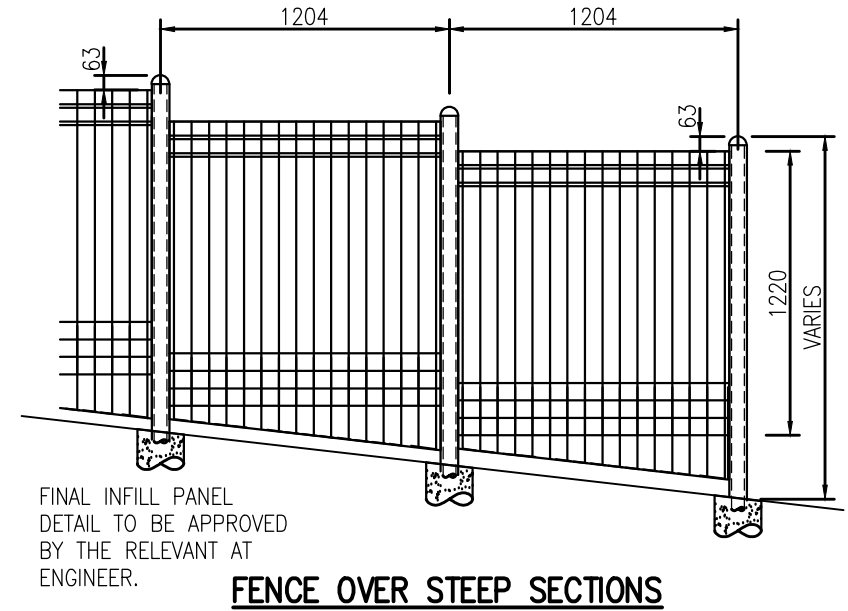
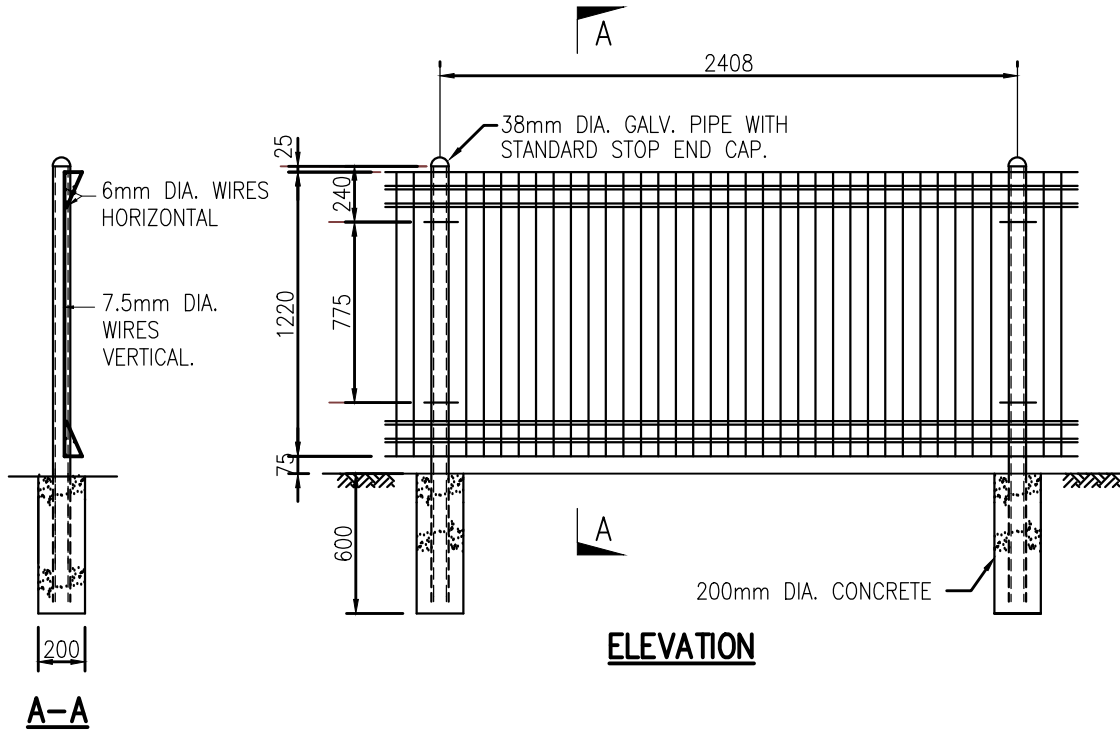
POST DETAIL

REVISION	BY	DATE
Draft - for comment	MD	06/13



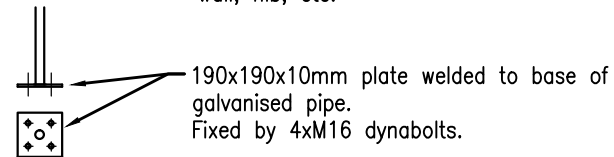
AUCKLAND TRANSPORT CODE OF PRACTICE		SCALE: N.T.S.
TITLE TYPICAL WIRE FENCE DETAIL A		DRAWING No. RR009
		VERSION 1.0

Drawing set for Chapter 9 - Road Restraint Devices



- NOTES**
1. STEEL TO BE HIGH TENSILE WITH ULTIMATE STRENGTH OF 600-800N/mm .
 2. THE RODS ARE TO BE ELECTRICALLY WELDED TO COMPLY WITH NZS 3422.
 3. TOLERANCES ON OVERALL DIMENSIONS OF THE FINISHED PANEL TO BE 25mm AND BARS TO BE PLACED WITHIN 2mm OF THEIR TRUE LOCATION.
 4. FOLDED PANELS TO BE GALVANISED TO SPECIFICATION CES 306:1992.
 5. SHARP EDGES OF THE PANEL ARE TO BE ROUNDED OFF BEFORE GALVANISING.

Alternate Fixing
Post bolted to concrete work,
wall, nib, etc.



REVISION	BY	DATE
Draft - for comment	MD	06/13



TITLE

AUCKLAND TRANSPORT
CODE OF PRACTICE

TYPICAL WIRE FENCE DETAIL B

SCALE:
N.T.S.

DRAWING No.
RR010

VERSION
1.0