



AMETI

Van Damm's Lagoon

Van Damm's Lagoon is an important community feature that sits at the edge of the new AMETI link road. Work has started at the lagoon, aimed to improve stormwater quality and ecology, while providing an enhanced reserve area for the community to enjoy. It is part of an integrated approach to improving stormwater management within the catchment.

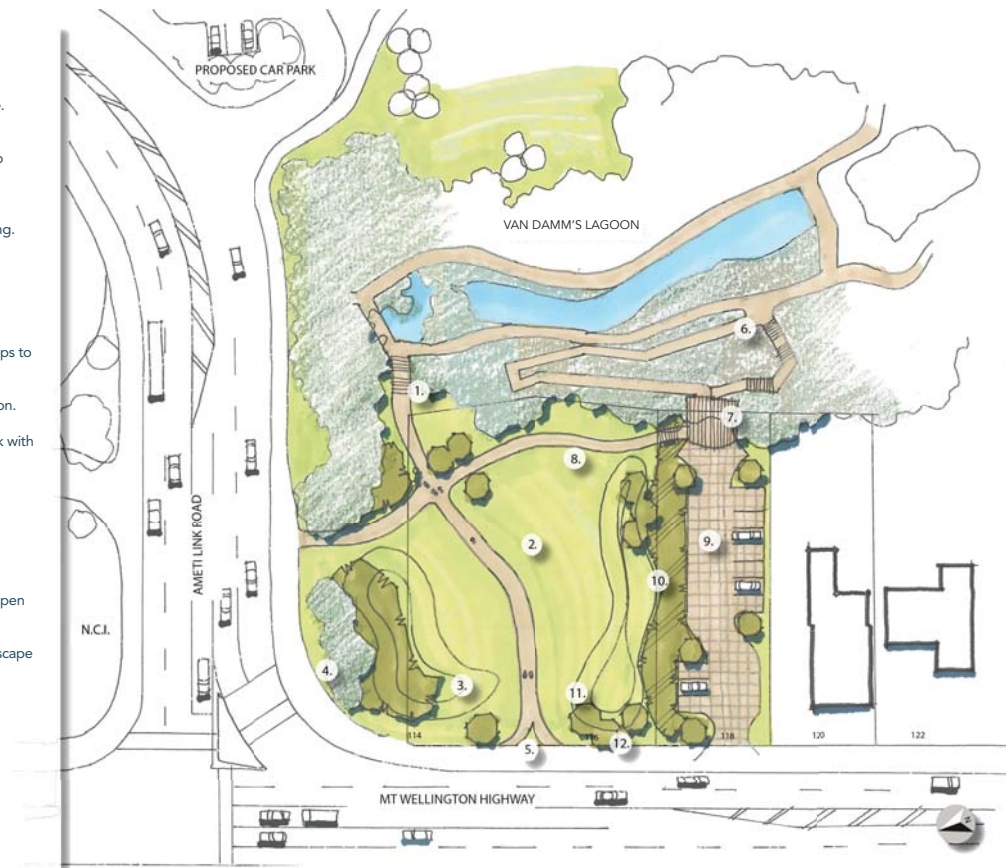
Enhancements include:

- Weed removal and wetland planting to enhance water quality treatment
- Upgraded tracks
- Removal of the existing accumulated sediment from the pond
- Improving local ecology
- Additional land purchased
- Construction of a maintenance access track to the northern end of the pond
- Creating a sediment forebay at the upstream end of the ponding area (immediately downstream of the pipe bridge)
- Re-shaping to create new bunds and wetland planting areas to enhance treatment
- Wider footpaths
- New parking bays and entrance to Van Damm's Lagoon
- New carpark with entrance from AMETI link road

Key

- 1 Replace existing steps with a new structure.
- 2 Grassed open space to provide amenity, informal recreation and allow clear views to Van Dammes Lagoon from AMETI and Mt Wellington Highway.
- 3 New mounding to elevate new tree planting.
- 4 Existing trees to be retained.
- 5 New path into reserve from Mt Wellington Highway
- 6 New accessible ramp and reconfigured steps to Van Dammes Lagoon from new car park.
- 7 New deck to overlook Van Damm's Lagoon.
- 8 New path to link and integrate the car park with the open space.
- 9 New parking bays and entrance to Van Damm's Lagoon.
- 10 New parking bays and entrance to Van Damm's Lagoon
- 11 Possible mounding to form soft edge to open space.
- 12 Indicative shade trees that improve streetscape of Mt Wellington Highway.

-  Existing vegetation
-  New tree planting
-  New planted swale / revegetation planting



Above: Future Van Damm's Lagoon layout.