

On the Move

AMETI EASTERN BUSWAY | AN UPDATE OF WHAT'S AHEAD



AN UPDATE FROM THE EASTERN BUSWAY TEAM

It's been an exciting few months for the AMETI Eastern Busway project and work is now underway along the entire Stage 1 route between Panmure and Pakuranga Town Centre.

Recently, work crews have been busy cutting back the cliff and building the new retaining wall along the northern side of Lagoon Drive, giving us the space to build the busway along with cycling and walking paths. We have also

launched a new T2 lane, express bus services and a Park and Ride at Lloyd Elsmore Park to give you more travel options during the busy construction period. The new express bus services depart from Howick and the Lloyd Elsmore Park and Ride regularly during peak hour, connecting to further trains or buses at Panmure Station.

You may have recently seen a large boat-like structure floating next to Pakuranga Bridge. This vessel will be used by our crews to start construction on the new busway bridge which is a vital part of the project offering buses, cyclists and

pedestrians a dedicated connection across Tamaki River. The bridge is due for completion in 2021.

Finally, we would like to thank everyone for their patience and understanding as work continues. We appreciate that some of our work can be disruptive whether you live locally or travel through the area. The result will be improved public transport, safer cycling and walking connections, new reserves and public spaces and, better choice and faster journey times for all those who live, work and travel around East Auckland.

如果您希望看到简报的中文版本，请访问 AT.govt.nz/ameti 并转至翻译资源。

WHAT'S IN THIS ISSUE?

1 Breathe life into Panmure Town Centre

2 More travel choices offered during construction

4 Engineers Corner Building the retaining wall

Let's get East Auckland Moving

1 Creating a safer, more accessible Panmure



The design will help breathe life in to the Panmure town centre where the famous Panmure sign once stood.

More changes are coming to the new and improved Panmure intersection as we push ahead with building the AMETI Eastern Busway.

The existing roundabout will change and use temporary traffic lights to control the flow of traffic. The changes will come into effect from October 2019, until the intersection changes again in early 2020, before a further change to the final intersection design including the new Busway.

Ultimately the intersection will become safer, more accessible for cyclists and pedestrians once completed, as well as enabling buses to drive safely and reliably between Panmure Station and Lagoon Drive.

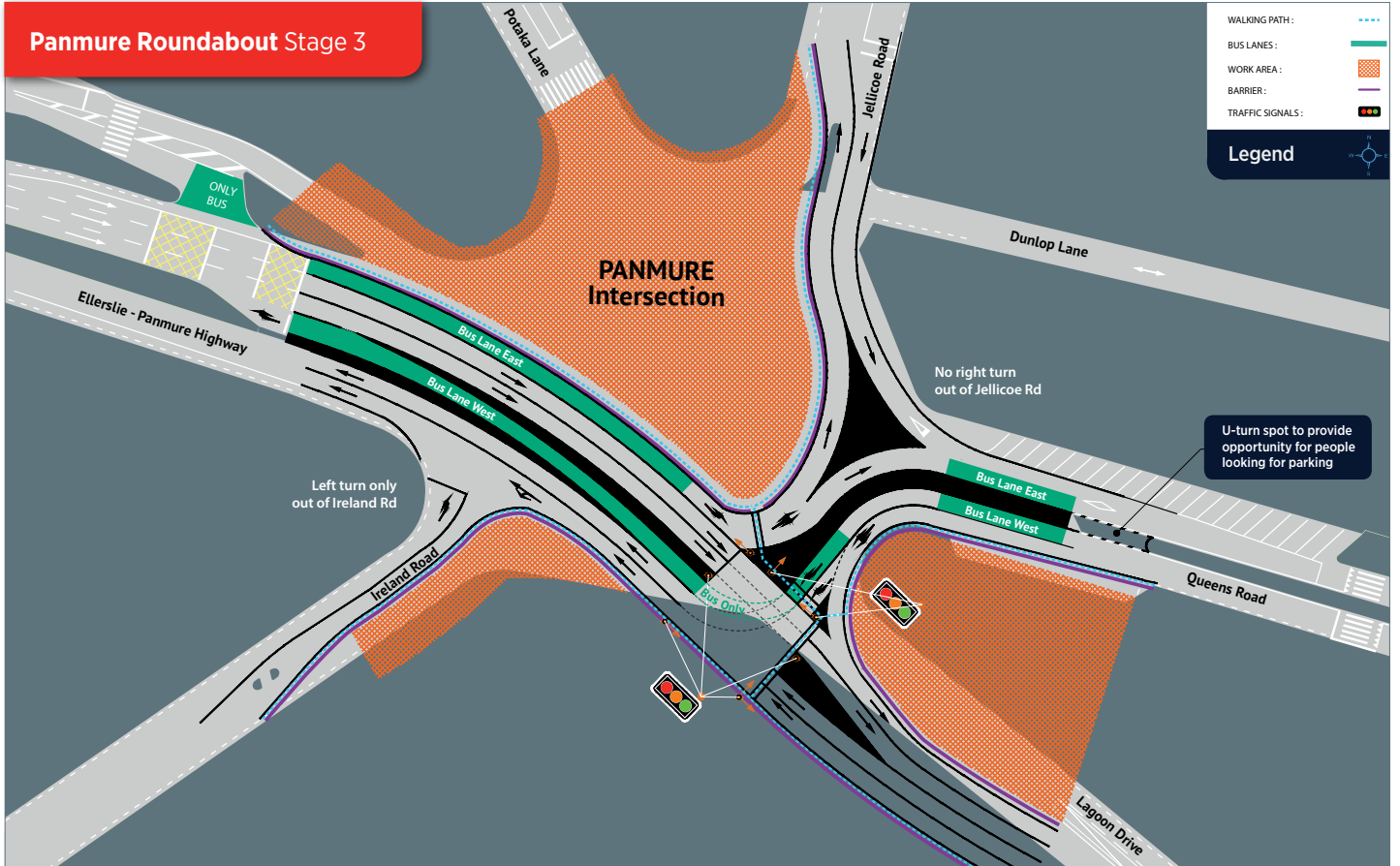
Help is here

Construction of the AMETI Eastern Busway is underway. If you think you will be affected by this work we can help. We have a team of people in your area offering residents personalised journey plans. Complete our short survey online or speak to one of the team when they knock on your door.

Visit [AT.govt.nz/travelplaneast](https://www.at.govt.nz/travelplaneast) for more information.



The Panmure Roundabout will undergo further changes from October, including the introduction of traffic lights. This is a further step in plans to transform this area into a signalised intersection.



The temporary changes include:

- **Ellerslie Panmure Highway -**
No right turn into Ireland Road
- **Jellicoe Road -**
Left turn out only into Queens Road
- **Dunlop Lane -**
Entry and exit from Pilkington Road only
- **Queens Road -**
No right turn into Jellicoe Road
- **Lagoon Drive -**
No right turn into Jellicoe Road or Queens Road
- **Ireland Road -**
Left turn out only into Ellerslie Panmure Highway
- **Potaka Lane -**
Entry and exit permanently closed at the intersection

2 More travel choices offered during construction of AMETI Eastern Busway



Bridges, busways and intersections are all now under construction as part of the AMETI Eastern Busway project, and we're excited! Auckland Transport and our contractor are working hard to get on with the job, while keeping traffic moving and minimising disruption to local residents and businesses.

As part of our plan to do this, the T2 lane on Pakuranga Road (between Dunrobin Place and Gossamer Drive) was launched on June 30, as we increase the amount of travel options for people during construction.

Additional travel improvements include express bus services between Howick, Pakuranga and Panmure Station and a Park and Ride service at Lloyd Elsmore Park. (where you can park and catch one of our 728 or 729 express shuttles to Panmure Station).

To make sure we minimise traffic, we are maintaining all traffic lanes during peak travel times, using live monitoring, adjusting traffic signals and carrying out the more disruptive work during off-peak travel times, holiday periods and weekends, where possible.

AMETI Programme Director Duncan Humphrey says,

“Whilst we are working hard to keep traffic flowing, some disruption can be expected given the amount of work taking place.

We thank people in advance for their patience and cooperation.

Our advice is that people think about their travel plans in advance. This may include looking at alternative travel routes, talking with employers about commuting outside of peak periods, carpooling or using public transport where possible.”



3 Sign up for a personalised journey plan

Auckland Transport is also working with residents, schools and businesses in local communities of Pakuranga and Howick, offering personalised journey plans that provide alternative options for people travelling around the area. Teams have been visiting local residents for the last month and 400 people have signed up for the initiative so far.

Aleki,
Local School
Teacher

For travel advice and details about construction, visit [AT.govt.nz/ameti](https://www.at.govt.nz/ameti) or for a personalised journey plan and travel advice visit [AT.govt.nz/travelplaneast](https://www.at.govt.nz/travelplaneast)



4 Building the retaining wall



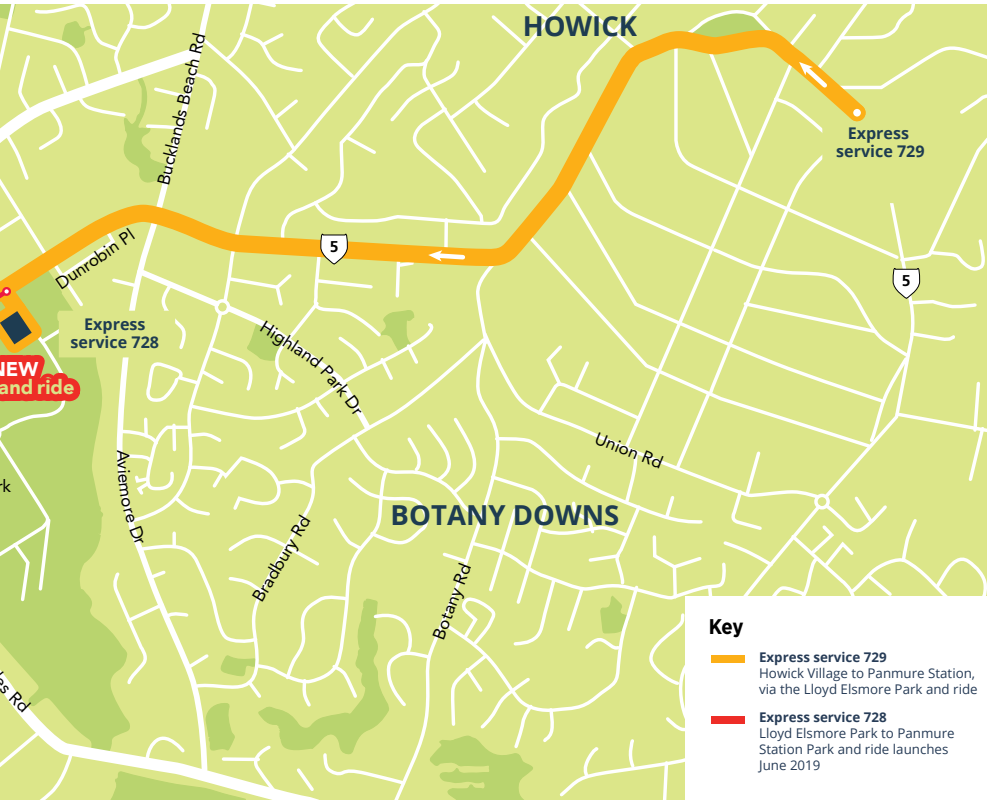
You may have thought that Lagoon Drive isn't wide enough to fit a rapid transit busway, walking and cycling paths, as well as general traffic lanes along it – and you'd be right. We don't actually have enough space for all of this at the moment, so we're making space.

Panmure and Pakuranga residents will know the cliff face that runs along Lagoon Drive, opposite the Panmure Basin. To make room for the busway, we're cutting the cliff face back – in some places by up to 12m. This cliff will be transformed in to a flat retaining wall just like the one in the diagram.

Around 250m of cliff face needs to be cut back from the intersection of Church Crescent and Lagoon Drive, in the direction of the Panmure Squash Club.

At its tallest point, the wall will reach 12m high, holding back the soil and cliff behind it!





Key

- Express service 729
Howick Village to Panmure Station, via the Lloyd Elsmore Park and ride
- Express service 728
Lloyd Elsmore Park to Panmure Station Park and ride launches June 2019

5 Upcoming Events

September

- Work begins on the Busway Bridge on Panmure side of Tamaki River
- Work begins on Latham Avenue and Dillimore Avenue road connection
- Complete retaining wall on Lagoon Drive located east of Panmure Squash Club

October

- First stage of Panmure Roundabout signalisation (temporary traffic lights) goes live
- Complete new Domain Road entrance to Lagoon Stadium car park

November

- Complete Latham Avenue and Dillimore Avenue connection

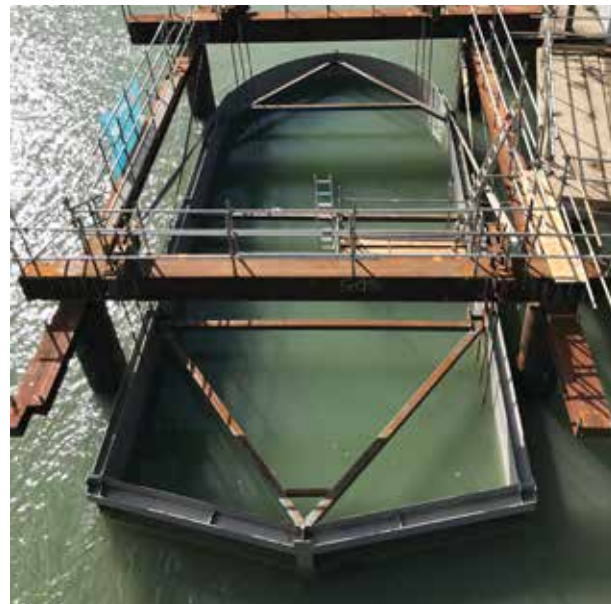


The 'soil-nail' method being used to build the wall requires our contractor to insert 8m long rods into the soil cliff face to ensure it is stable.

The end result will be the space needed for the Eastern Busway for everyone to use!

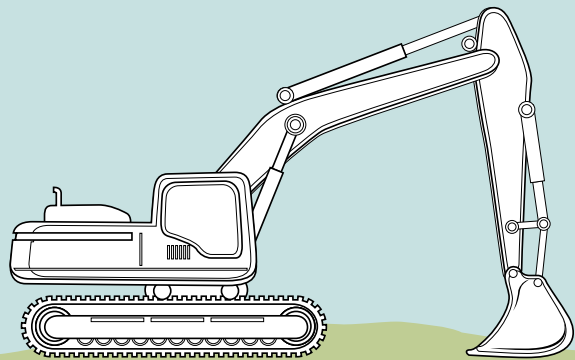
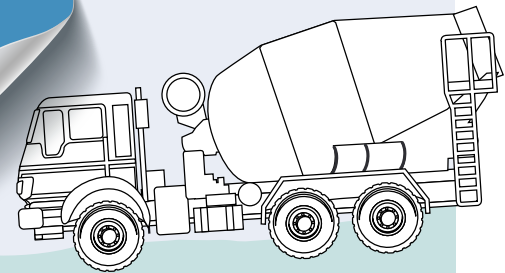
6 Photos + Kids corner

Look out for our bridge-building boat and diggers helping us on the job!



For travel advice and details about construction, visit AT.govt.nz/ameti or for a personalised journey plan and travel advice visit AT.govt.nz/travelplaneast

Kids corner
Add some colour!



It's all go around here.
Look out for some mean machinery.

