

Contact numbers

① International cables	0800 782 627
② Vector	0508 832 867
③ Waiheke - Pakatoa	09 372 9002
④ Waiheke to Rotoroa	09 950 3406
⑤ DOC	09 445 9142

Listen on VHF Channel 12 for shipping movements

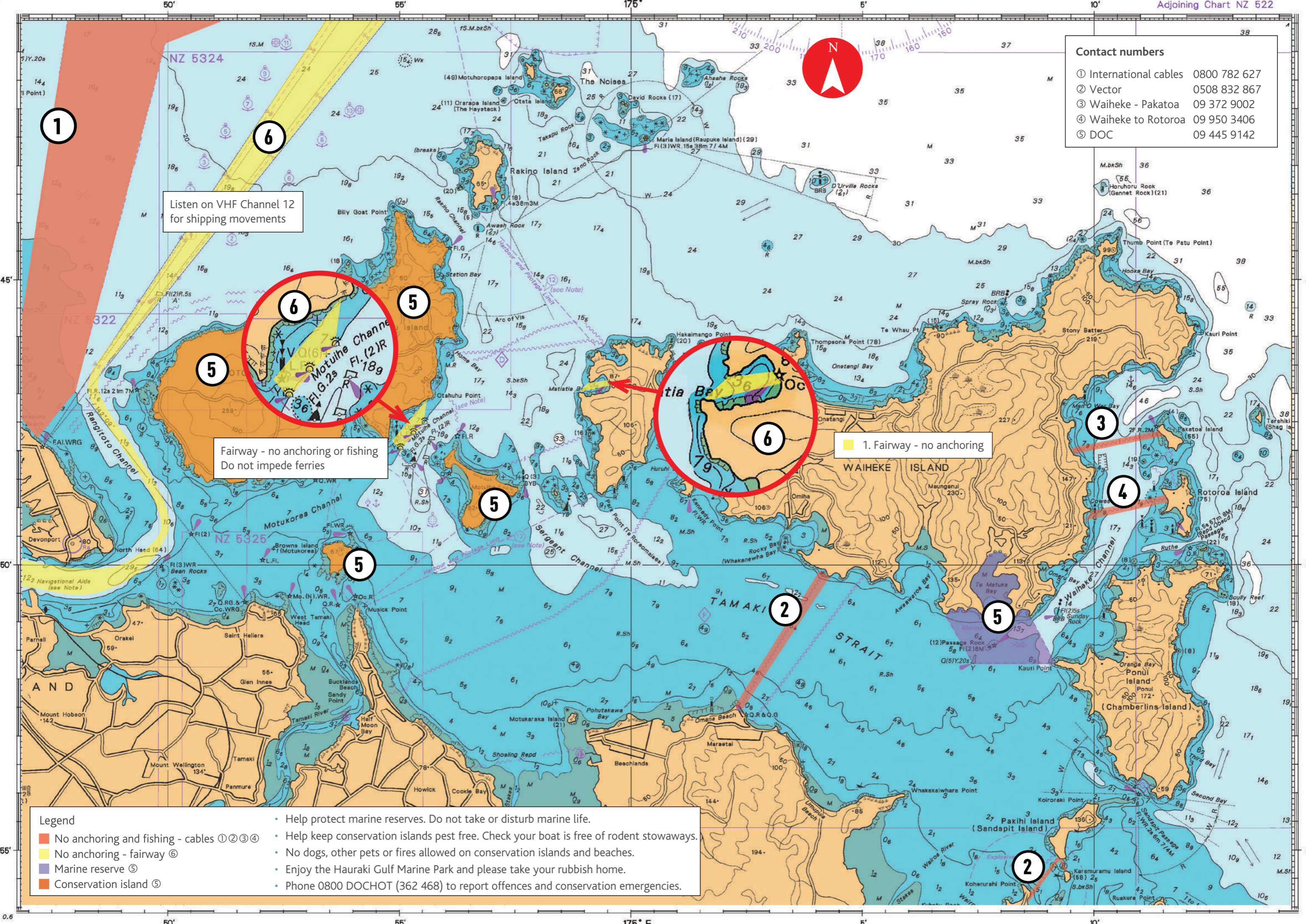
Fairway - no anchoring or fishing
Do not impede ferries

1. Fairway - no anchoring

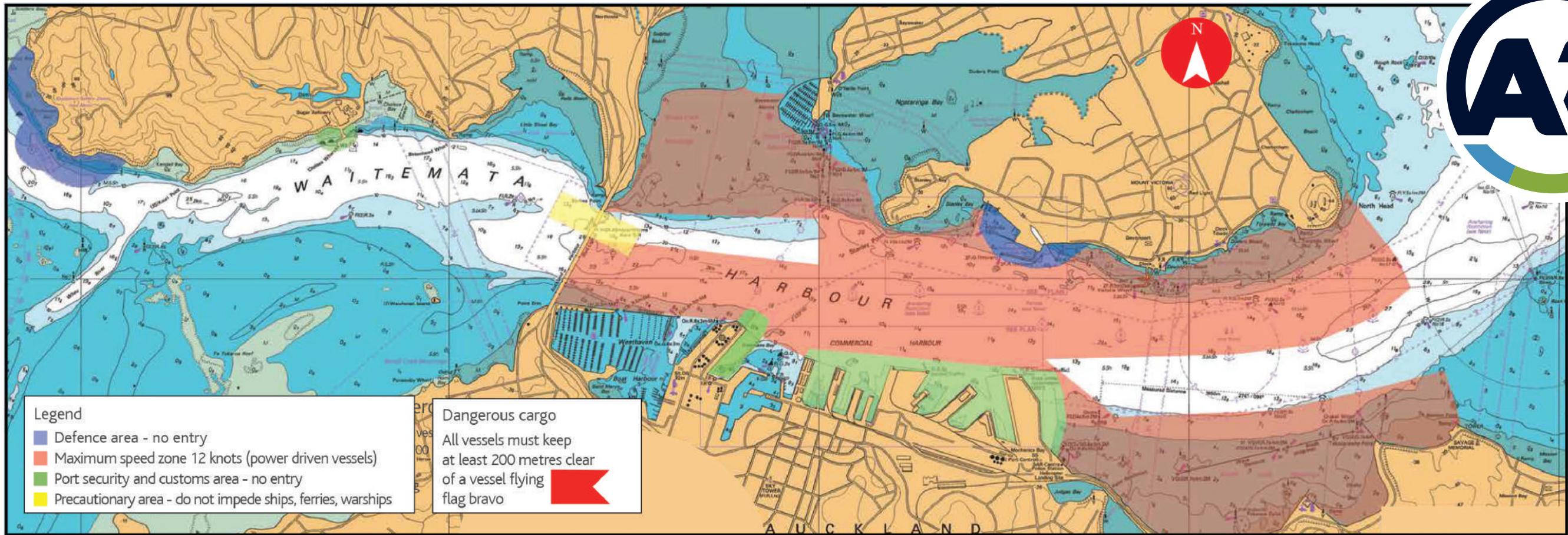
Legend

	No anchoring and fishing - cables ①②③④
	No anchoring - fairway ⑥
	Marine reserve ⑤
	Conservation island ⑤

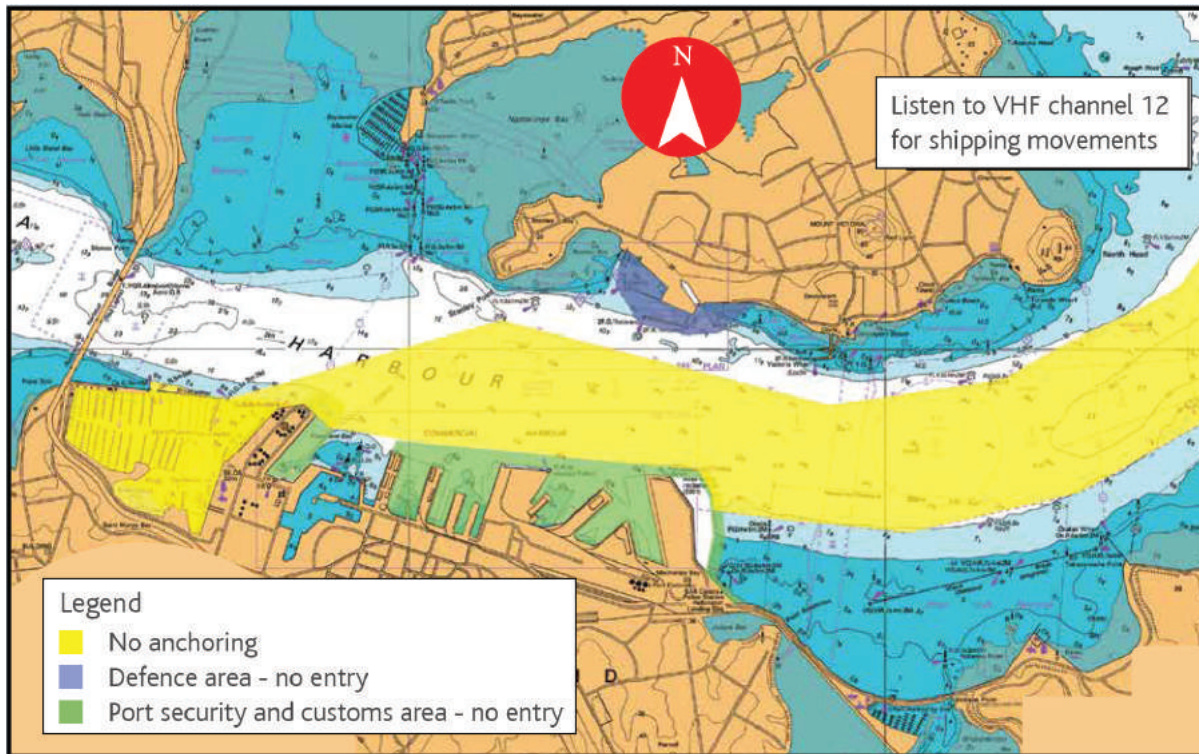
- Help protect marine reserves. Do not take or disturb marine life.
- Help keep conservation islands pest free. Check your boat is free of rodent stowaways.
- No dogs, other pets or fires allowed on conservation islands and beaches.
- Enjoy the Hauraki Gulf Marine Park and please take your rubbish home.
- Phone 0800 DOCHOT (362 468) to report offences and conservation emergencies.



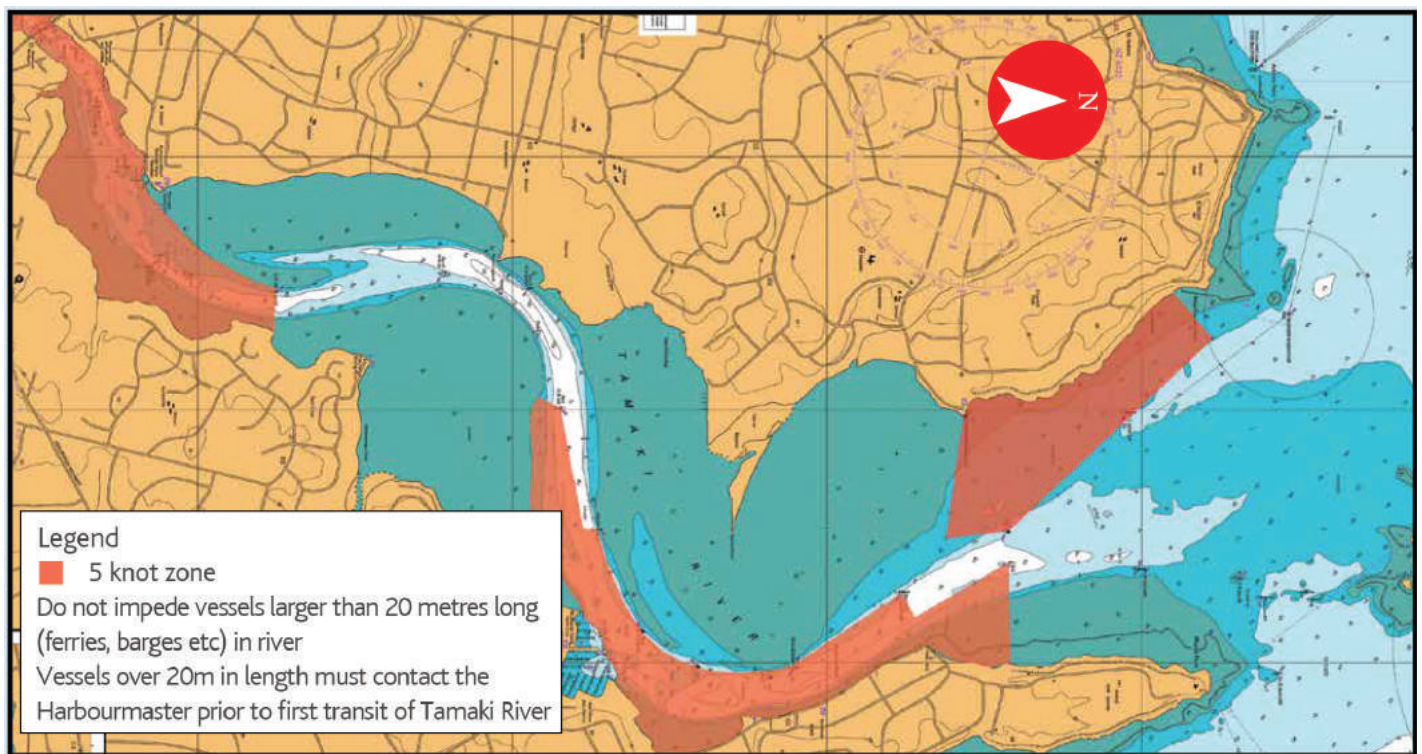
Auckland Restricted Areas



Inner Harbour



Tamaki River



Reproduced courtesy of Land Information New Zealand

**NOT TO BE USED
FOR NAVIGATION**



A speed restriction of 5 knots applies within 200 metres of the shore or 50 metres of another boat or person in the water.

Lifejackets - take them, wear them.

Harbourmaster
24 hour emergency duty officer
Phone: 09 362 0397 ext 1

**In an emergency use
VHF channel 16 or
phone 111**