



Public feedback is open until Friday 26 April

Manurewa Road Safety Improvements

Have your say...

## What is planned?

Auckland Transport (AT) are planning to make road safety improvements on residential streets in Manurewa to provide a safer environment for all road users.

We aim to reduce vehicle speeds by installing a combination of speed-calming measures such as speed humps, raised tables, and zebra crossings where justified. The improvements are proposed for within the area contained by Brown Road, Roscommon Road, Russell Road and Weymouth Road, as shown on the enclosed map.

The improvements will require the removal of five to six car parks where zebra crossings and Swedish tables are proposed, as well as the moving of some bus stops, for safety and visibility reasons.

The project is being partly funded by the Regional Fuel Tax, and the Manurewa Local Board.

### Regional Fuel Tax

The regional fuel tax is estimated to raise \$1.5 billion over 10 years which will be invested in more public transport and cycling infrastructure, improving road safety, increasing network capacity and performance, and in roading infrastructure. This investment will reduce death and serious injuries on our roads, provide more public transport and cycling options which in turn will reduce congestion.

### Why are these changes needed?

More people are dying or being seriously injured on Auckland's roads. Speed is a major factor in both

Manurewa has been prioritised as an area for improvement based on a number of factors, including:

	Safety concerns raised by residents
	Local Crash Analysis System (CAS) data - 213 accidents in the last five years
	Vehicle speeds on key roads in Manurewa are in excess of the current speed limits
<b>121 km/h</b>	The two highest speeds recorded were in excess of 121km/h on Rowandale Road
	Location of community facilities (schools, shops, parks and community centres)

the likelihood of a crash occurring and the severity of the outcome if a crash does occur.

Our crash stats show 80% of all deaths and serious injuries occur on 50km/h roads. And nearly half of those deaths and injuries involve vulnerable road users - children, the elderly, people walking and people on bikes or motorcycles.

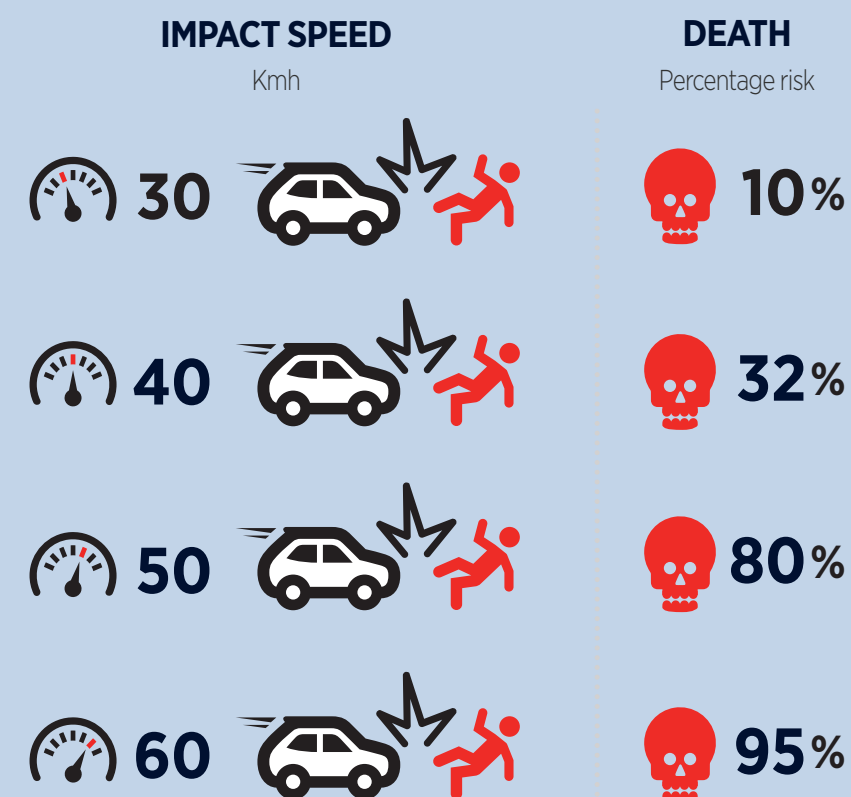
The proposed speed calming measures will help to create a slower speed environment, reducing the risks of accidents, making the streets safer for everyone.

## Reducing speed saves lives

AT are committed to improving safety for all road users in Auckland. Our main focus is to protect people from dying or being seriously injured on our roads. One of the fastest ways of minimising road trauma involves reducing vehicle speeds in residential areas.

Previously, we implemented speed-calming measures on a single street. Now we are prioritising areas (clusters of streets) where the need for speed-calming is most required. The new area-based focus recognises that speed-calming changes support safety in residential area.

### Death and injury risk percentages



Survivability rates vary significantly based on a number of factors and scenarios. AT takes a preventative approach with respect to the survivability of our most vulnerable road users. Data taken from Research Report AP-R560-18 published in March 2018 by Austroads - the Association of Australian and New Zealand Road Transport and Traffic Authorities.

## Proposed road safety improvements

Our transportation engineers have selected the type and location of each proposed safety measure based on a variety of criteria.

These include:

- Proximity to schools or other locations where there are a higher number of people walking or on bikes.
- International best practice guidelines for positioning measures to reduce speed in residential areas.
- Space available between driveways and/or bus stops.
- Whether roads are bus routes.

See enclosed map for proposed locations. The images below display the types of measures we plan to install in your area. Please note that these are for illustrative purposes only.

### Raised table zebra crossing



Where pedestrian numbers justify them, zebra crossings will be installed on speed tables. A speed table is a raised section of the road with ramps on each side and a flat surface on top. The white arrows indicate the raised surface and direction of the incline.

### Raised intersection



A raised intersection is a speed table that covers an entire intersection, with ramps at each entry point. The intersection is raised to the level of the footpath, making it easier for pedestrians to cross.

### Speed hump



A speed hump is a short rounded raised section of the road. The white arrows indicate the raised surface and direction of incline.

### Entry treatment



Entry treatment consists of a coloured area on the road notifying road users that they are entering a slow speed area.

### Swedish-style speed table



Swedish-style speed tables are a raised table with only one sharp ramp, which produces a smoother ride for buses. Compared to the normal speed table that has two sharp ramps.

## What are we seeking feedback on?

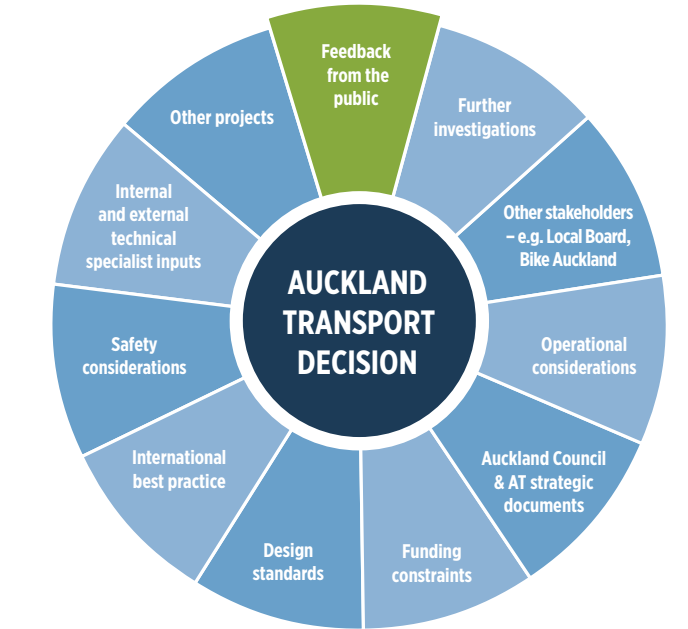
We want your feedback to help us improve our plan for the proposed road safety improvements. Local knowledge will help give us a better understanding of the area, your needs, and any improvements that can be made to the design.

### You can help by telling us whether you

- Have any thoughts on the proposed safety improvements.
- Have any suggested changes to the proposed road safety measures.
- Have any other comments or suggestions to improve road safety in Manurewa.

### What will we do with your feedback?

Your feedback is important to us. Once we have received and analysed all feedback, we will use it to help refine the design of the road safety measures.



213 crashes in Manurewa\*

- 75 - loss of control crashes
- 47 - crossing/merger crashes
- 20 - collisions with parked vehicles
- 19 - pedestrian crashes
- 6 - rear end crashes

\* Over the last 5 years

We will also produce a report on the feedback received, which will be available on our website. Submitters who provide contact details will be notified when this report is available.

### How do I provide feedback?

If you wish to provide feedback, please either:

- Complete the freepost feedback form in this brochure.
- Go online to [AT.govt.nz/haveyoursay](http://AT.govt.nz/haveyoursay) and fill in the online survey.

If you require assistance completing the forms, you can call us on (09) 355 3553 and our contact centre staff will fill in the feedback form with you over the phone.

### Talk to us in person

You can meet our project team, ask questions and offer feedback at our drop-in sessions.

- Date:** Friday 5 April
- Time:** 3.00pm - 6.30pm
- Location:** Rowandale School, 73 Rowandale Ave, Manurewa, Auckland 2102
- Date:** Saturday 13 April
- Time:** 1.00pm - 4.00pm
- Location:** Manurewa Leisure Centre, 33 Frances St, Manurewa, Auckland 2102



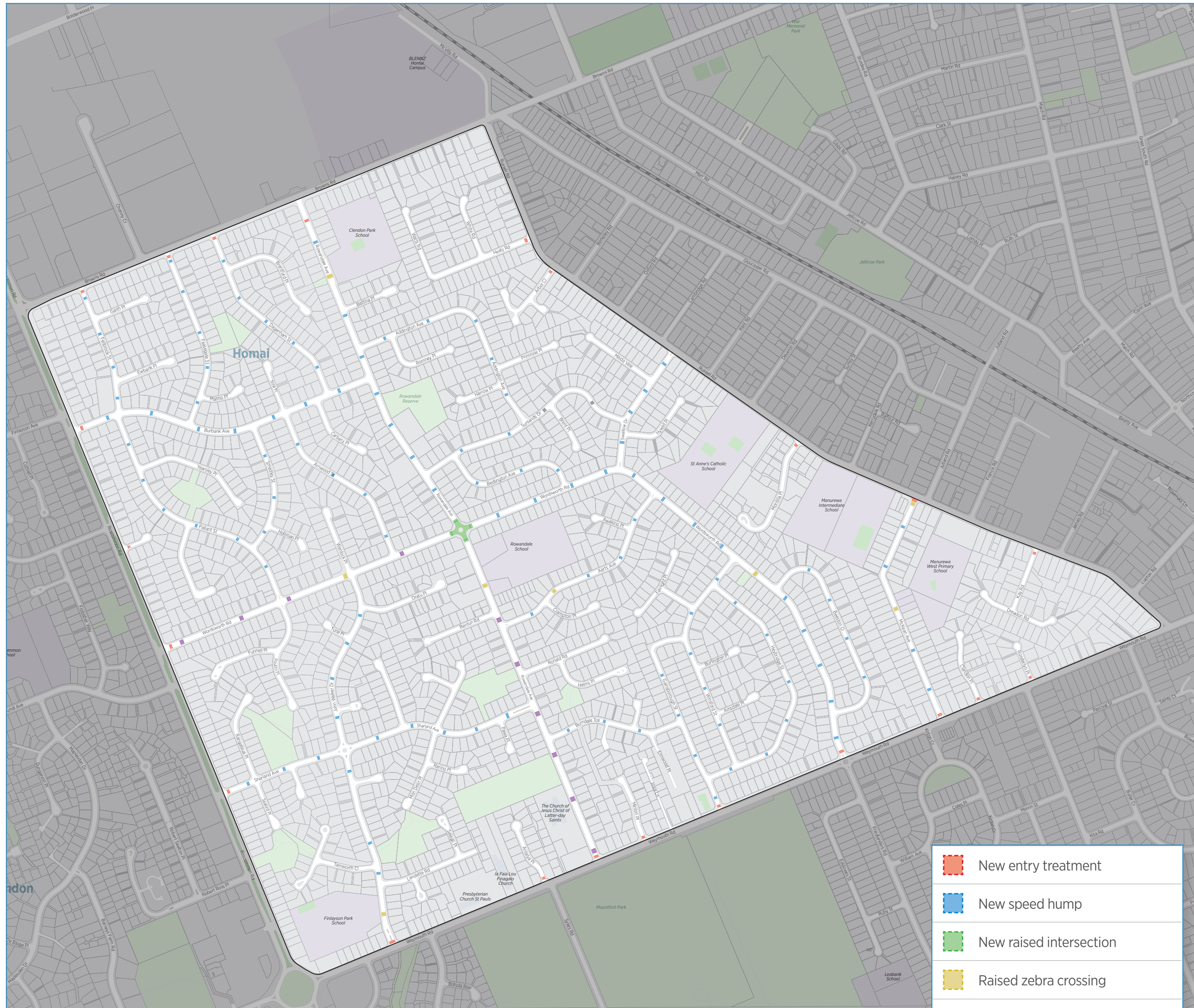
Consultation and Engagement Team  
Auckland Transport  
Private Bag 92250  
Victoria Street West  
Auckland 1142

PROJECT: MANUREWA ROAD SAFETY IMPROVEMENTS



# Manurewa

## Proposed locations of road safety improvements



	New entry treatment
	New speed hump
	New raised intersection
	Raised zebra crossing
	New Swedish-style speed table
	Existing speed hump
	Project area

### Feedback form PLEASE COMPLETE THIS FREEPOST FORM AND RETURN IT TO US BY FRIDAY 26 APRIL:

Alternatively, you can provide feedback online at [AT.govt.nz/haveyoursay](https://www.aucklandtransport.govt.nz/haveyoursay) If you need assistance completing the form, please call us on **(09) 355 3553** and our contact centre staff will fill in the feedback form with you over the phone. If your comment relates to a specific location, please be sure to state where. You are welcome to attach additional pages (or provide feedback online) if you need more space.

#### Personal information

Name: \_\_\_\_\_

Business/organisation: \_\_\_\_\_

Street address: \_\_\_\_\_  
 \_\_\_\_\_  
 \_\_\_\_\_

Suburb: \_\_\_\_\_

Postcode: \_\_\_\_\_

Email: \_\_\_\_\_

Phone: \_\_\_\_\_  
 \_\_\_\_\_

Providing personal details is optional. Providing your postal or email address ensures that we can contact you with updates on the project.

**PRIVACY: AT is committed to protecting our customers' personal information.**

#### What best describes your interest in this proposal? (PLEASE TICK ALL THAT APPLY)

- I live or own property in the project area
- I work in the project area
- I study in the project area
- I pick up or drop off people in the project area
- I drive in the project area
- I walk in the project area
- I cycle in the project area
- Other (please specify) \_\_\_\_\_

#### How did you hear about this project? (PLEASE TICK ALL THAT APPLY)

- Information posted / emailed to me
- Auckland Transport website
- News article (paper or online)
- Newspaper advertisement
- Blog e.g. Bike Auckland, Greater Auckland
- Social media e.g. Facebook, Neighbourly
- Word of mouth
- Other (PLEASE STATE) \_\_\_\_\_

#### Questions:

1. What do you think about the proposed road safety improvements?

\_\_\_\_\_

\_\_\_\_\_

\_\_\_\_\_

\_\_\_\_\_

2. Do you have any suggested changes to what is proposed?

\_\_\_\_\_

\_\_\_\_\_

\_\_\_\_\_

\_\_\_\_\_

3. Do you have any other comments or suggestions for improving road safety in Manurewa?

\_\_\_\_\_

\_\_\_\_\_

\_\_\_\_\_

\_\_\_\_\_