

# HEALTH & SAFETY PERFORMANCE GRAPHS

Board Report Attachment 1

March 2017



73%



## KEY TRENDS



The number of total recordable injuries for workers across all AT activities has decreased YTD.

The Lost Time Injury Frequency Rate (all AT Employees) continued downward trend

AT staff Health & Safety reporting continues to trend upwards.



### Flat Trend

in the Total Injury Frequency Rate across all activities (QTR 3)



**2** Lost Time Injury  
in March



**167** Cases  
reported in March



# SUMMARY

12 months to 28 February 2017



## Total Injury Frequency Rate for all AT activities

Continued downward trend in injury frequency rates YTD



## Monitoring and inspection

Independent site inspections are stable



## Auckland Transport Employee Injuries

Continued downward trend in Lost Time Injury Frequency Rate YTD



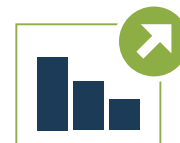
## Near Miss reporting

A decrease in Near miss reporting in March



## Injuries to other persons

Downward trend in reported injuries to other persons due to AT activities



## Drug and alcohol testing

An increase in Drug and Alcohol testing by AT's suppliers remains highly variable

# WORKER INJURIES FOR AT AND KEY SUPPLIERS

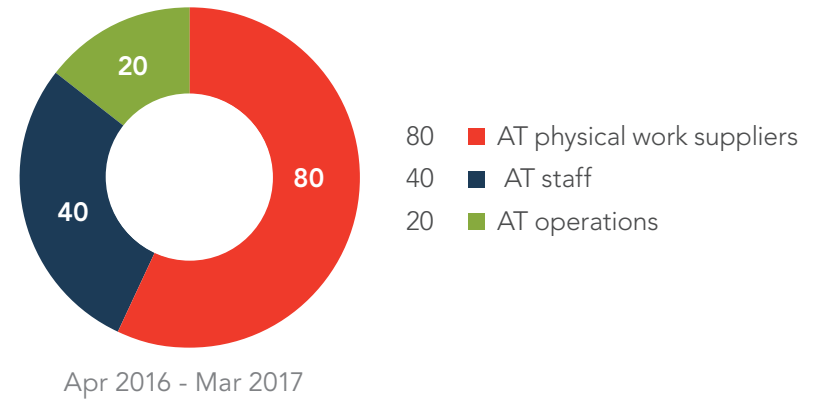


## Emerging flat trend in all injury frequency rates YTD

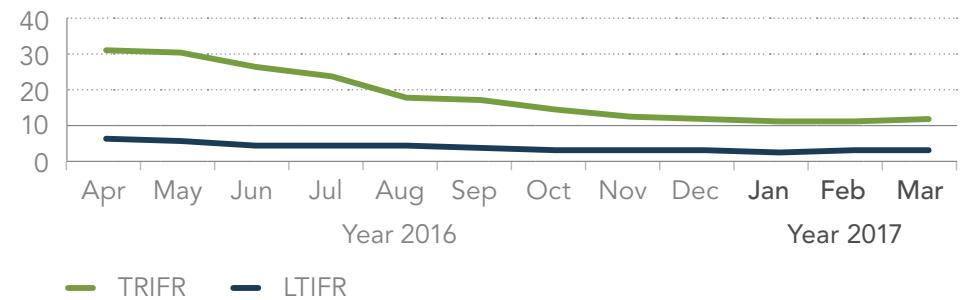
The Total Recordable Injury Frequency Rate (TRIFR) is 11, this includes all recordable injuries for AT and its key suppliers.

Flat trend in the Lost Time Injury Frequency Rate at 3 (no change in 6 months).

Injuries by Work Area



Injury Frequency Rate for all AT Activities (per 1,000,000 Hours Worked)



# AT EMPLOYEE INJURIES

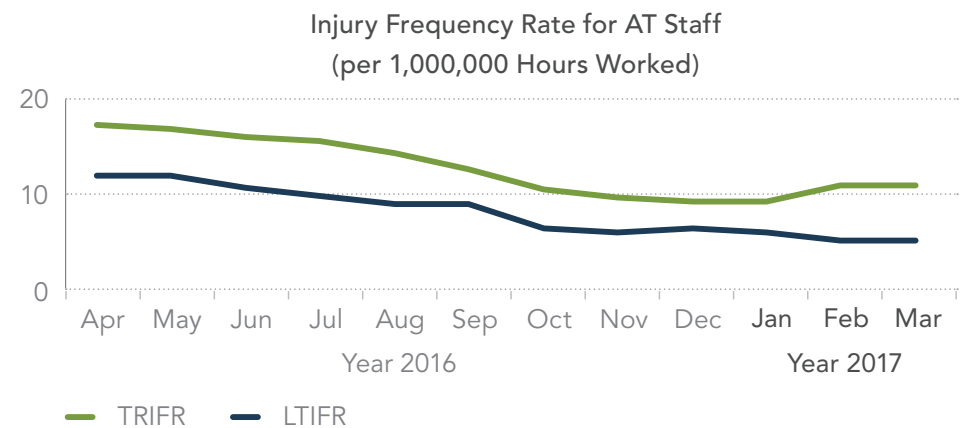


**Overall downward trend** in the Lost Time Injury Frequency Rate (LTIFR), a significant reduction YTD.

**There were 28 staff injury/incident cases reported in Synergi for the month of March.**

An increase in minor injuries now being reported.

- 4 injuries reported (all from slips, trips, and falls) with two resulting in lost time (ankle sprains).
- 21 days lost time days for ACC work related injuries in March. From 3 Staff members, this includes 1 existing ACC claim from February (Parking Facilities Fracture), and 2 new claims in March.
- 1 gradual process work related ACC claim has been made for Tinnitus (Hearing condition) and neck discomfort. This is currently under review by ACC. Staff member has worked in the AT Metro Britomart control room for 12 years. Investigation including Noise assessment being undertaken by AT Health and Safety.



- 24 reports of aggressive behaviours / verbal abuse / threats of violence towards our people in parking compliance and service centres.
- 24 reports of aggressive behaviours / verbal abuse / threats of violence towards our people in parking compliance and service centres.



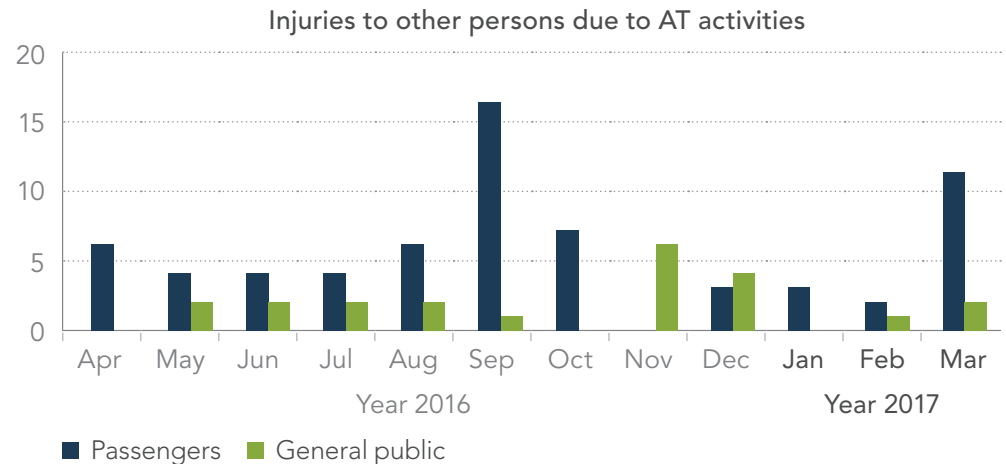
# INJURIES TO OTHER PERSONS (PASSENGERS & GENERAL PUBLIC)



Reported injuries to passengers and the general public due to AT activities is variable. 11 passengers reported injuries, the highest to date, however not unexpected due to the March peak in public transport patronage.

7 of the reported injuries to passengers were as the result of slips, trips and falls on bus, and in and around our PT facilities. The remaining injuries due to the sudden stop of the bus.

2 members of the public reported injuries, one was not related to AT activity, (public car v pedestrian at an AT facility), and bus v pedestrian (member of public ran in front of the bus, level of injury not reported).



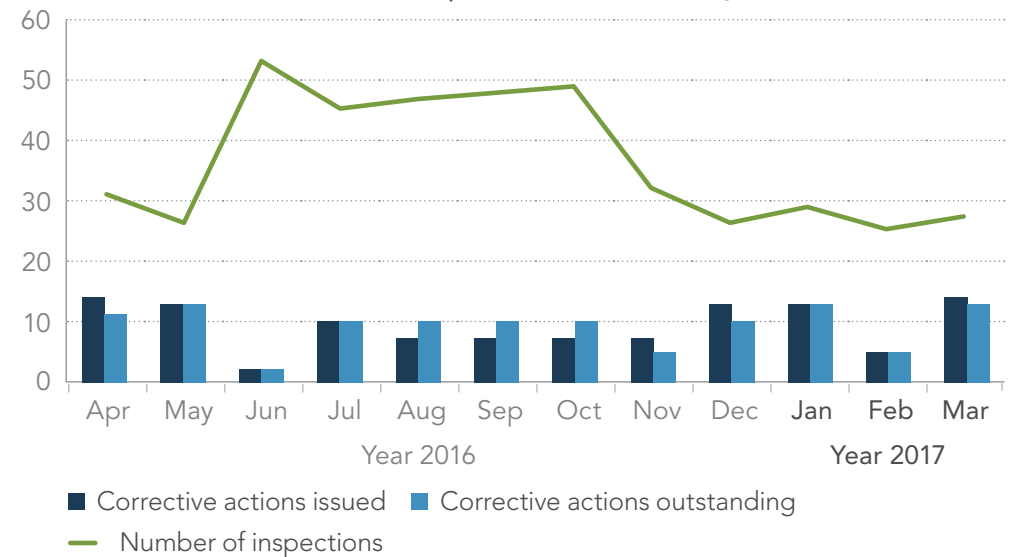
# MONITORING AND INSPECTION



## Independent Health and Safety monitoring and inspections (Physical Works)

The trend in corrective actions issued in March related to below standard temporary pedestrian facilities, and poor document control, and poor pre start risk assessments. Of note was an improvement in temporary pedestrian facilities and housekeeping (which have been the top areas of non performance to date).

H&S Inspection and Monitoring



# NEAR MISS REPORTING



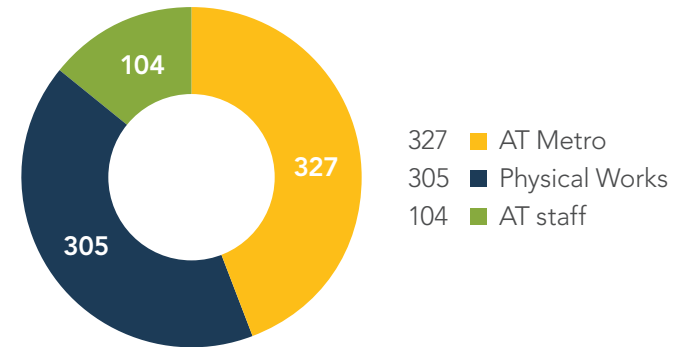
## Near Miss Reporting

A decrease in near miss reporting in March, however an overall increase YTD.

8 serious near miss reported, notably half were relating to near miss incidents at level crossings, the remaining incidents were non collision incidents, for example where buses are required to take evasive action due to poor public driver/traffic behaviours.

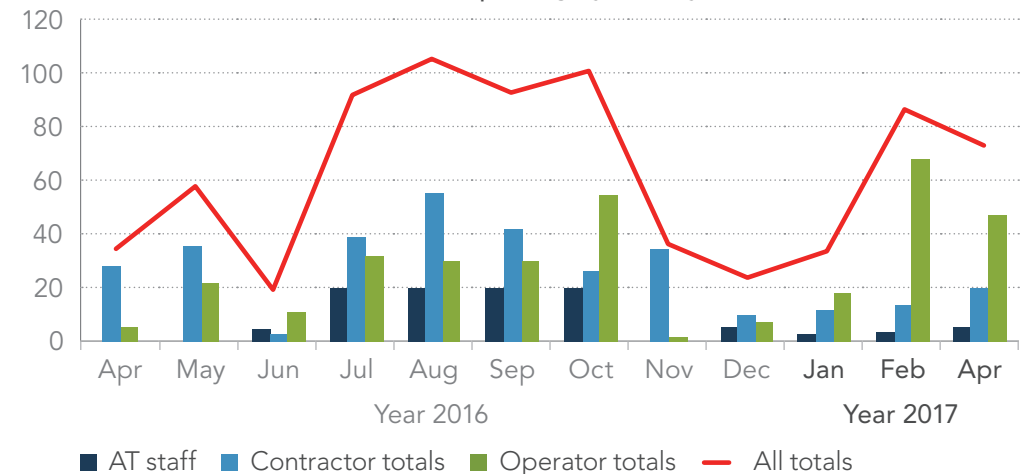
No WorkSafe NZ notifiable incidents recorded in March

Total near hit reporting by activity area



Apr 2016 - Mar 2017

Near hit reporting by activity area





# DRUG AND ALCOHOL TESTING



## Emerging trend of increased rates of Drug and Alcohol testing across all AT activities

The number of tests reported per month are variable, and is due to drug testing practice of reasonable cause and post accident, both of which are unpredictable. A number of larger contractors have been successful in including random testing.

A total of 167 tests reported in March, and two positive test results (a .01% +ve test rate) this significantly differs from the published rates by the New Zealand Drug Detection Agency (NZDAA) at 4.19% positive test rate which indicates potential under reporting, and will be addressed in the next round of contractor/supplier forums.

Drug and Alcohol Testing Across AT Activities

