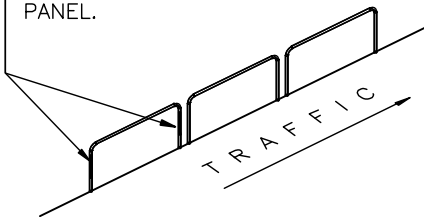


FIXING DETAIL AS PER BELOW (SOCKET OR SURFACE MOUNTED)

FENCE/BARRIER DETAIL – ELEVATION

SCALE 1 : 25

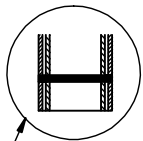
REFLECTORISED TAPE, 450x40 HIGH DENSITY GRADE CLASS 1 ON LEADING EDGES OF FIRST PANEL.



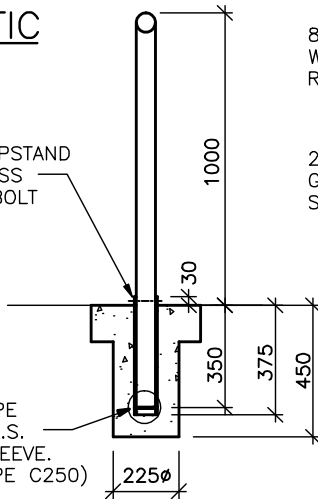
SCHEMATIC
N.T.S.

NOTE:
BRIDGE PANELS TO BE LEFT GALVANISED.
PEDESTRIAN REFUGE PANELS TO BE PAINTED YELLOW.

30mm SLEEVE UPSTAND WITH M6 STAINLESS STEEL LOCKING BOLT



67 I.D. GALV. PIPE SLEEVE 13mm M.S. PIN THROUGH SLEEVE. (65NB HEAVY PIPE C250)



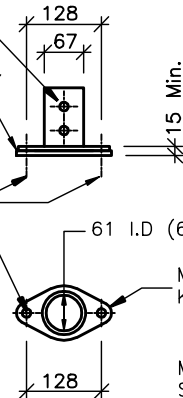
SOCKET MOUNTING DETAIL

SCALE 1 : 25

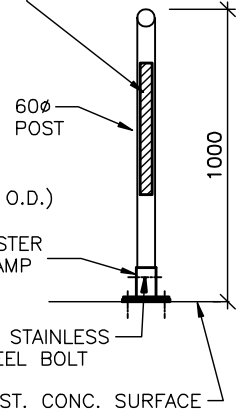
HOLE FOR M6 STAINLESS STEEL LOCKING BOLT

8mm PLATE FILLET WELDED TO PROPRIETARY RAILING BASE FLANGE.

2x M16 BOLTS GRADE A4-70 STAINLESS STEEL



450x40 STRIP OF REFLECTORISED TAPE, HIGH DENSITY GRADE CLASS 1



MASTER KLAMP 4.02
(CAST STEEL) or SIMILAR APPROVED

SURFACE MOUNTING DETAIL

SCALE 1:12.5 & 1:25

NOTES:

1. All steel to be hot dipped galvanised.
2. All fastening wires to be made safe for pedestrians
3. Scratches to hot dip galvanising to be made good with Zinc rich paint galv. on site.
4. First panel in each direction to have a strip of reflectorised safety tape on side facing oncoming traffic.
5. All panels in Pedestrian Refuges to be painted Yellow.